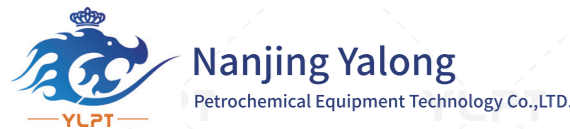


⚠ The technical structure of our company's products is continuously optimized, and the final product is subject to the design at that time!

YALONG is building one of the world's leading reciprocating pump organizations, and we are doing it by raising the traditional standard for value in the industry. We deliver value in a number of ways; through our broad product offering, ability to provide complete packaged solutions, and our worldwide network of sales and support locations. Most important however are our people and the dedication and experience they can bring to your applications. Contact a Yalong representative to learn how we can redefine the definition of value on your next pumping application.



NANJING YALONG
PETROCHEMICAL EQUIPMENT TECHNOLOGY CO.,LTD.



+86-25-86166871 +86-25-86166830

www.ylapipump.com

sales@jspump.cn

No. 2, Tianqiao Road, Jiangning District, Nanjing City, Jiangsu Province



OFFICIAL WEBSITE

PUMPING SOLUTIONS FROM NANJING YALONG



ENERGY | MUNICIPAL | MEDICAL | METALLURGY | PRINTING AND DYEING
FOOD | CHEMICAL | MINING | INDUSTRIAL | CONSTRUCTION

ABOUT US



YALONG has long been a leading supplier of pumping solutions for the Energy, Industrial, Chemical, Mining, Printing and dyeing, Food, medical, Steel/Aluminum, Reverse Osmosis, Glass, detergent, high pressure scale-washing, geological, rock mechanic, electric power, and Municipal markets.

Many factors have contributed to our success, but the most important is our ability to provide unmatched overall value and true pumping solutions for our customers. We have redefined the traditional expectations in the industry by setting new standards for low cost of owner-ship, long service life, and ease of maintenance.

Yalong have more than 35 years of high pressure reciprocating pump (plunger pump/piston pump) design and manufacture experience, providing customers with quality service and competitive price.

Talented technical persons, high design level, complete quality control system, excellent after-sales team and service are available in the company.

We deliver value by:

Offering the most comprehensive line of reciprocating, positive displacement pumps available on the market today. Our wide range of cost effective pumps are available in a range of designs and materials. With over 28 unique pump frame sizes to choose from no matter if your service requires 5HP to 2400HP, chances are that YaLong has an optimal pump for your application.

Providing the experience and total capabilities that few other suppliers can match. We have the in-house expertise to carefully review your requirements and assist with the selection of the best products to meet the needs of your application. If your needs re-quire it, we can unitize the pump and provide anything from simple engine or electric motor driven pump skids to complete enclosed pumping stations.

2016

APPROVED HIGH-TECH ENTERPRISE

35

35 YEARS EXPERIENCE IN DESIGN
AND MANUFACTURE OF HIGH PRESSURE
RECIPROCATING PUMPS

40+

MORE THAN 40 NATIONAL PATENTS

12000

THE COMPANY COVERS A TOTAL AREA
OF 12,000 SQUARE METERS

WORLD-CLASS PROFESSIONAL RECIPROCATING PUMP DESIGNER & MANUFACTURER



We have over 40 patents related to reciprocating pumps, Our pumping units are designed, manufactured and tested fully in compliance with API 674 3rd Edition. Our primary reciprocating pump offerings are the T (Triplex) Series, Q (Quintuplex) Series and S (Septuplex) Series pumps. These pumps are horizontal reciprocating pumps offered in either a triplex or quintuplex configuration. All are available as plunger pumps, and many are also available piston pumps. These pumps are outstanding performers and extremely cost effective. They feature conservative pressure ratings and slow speed operation for enhanced durability. These are high pressure reciprocating pumps which have 28 types with 800 different specifications. Highest output pressure available is 250 MPa. And theoretical flow rate 0.2-600 m³/h. These high pressure pumps are used as water injection pumps used in oil field, CO₂ injection pump, supercritical extraction CO₂ pump, S-CO₂ liquid Circulating booster pump, high pressure steam boiler feed water pump, high pressure mud pump, cement grouting pump, pressure test pump, Ammonia pump, urea pump, ammonium carbamate pump, liquid ammonia pump, ammonium carbamate pump, copper liquid pump, Detergent slurry pump, reciprocating crude oil pump, Condensate pump, sea water pump, R.O. pumps, dephosphorizing pump, cleaning pump, Reciprocating intensifier pump, Ultra-high pressure pump, Hydraulic press pump, and The polymer injection pumps. All series of products of our company have mutual characteristics in advanced design, modern structure, stable run, convenient maintenance, safe and reliable sealing, long life in easy-wear parts, high volumetric efficiency, etc. On the base of existing series of products, tailor-made product with special specification can be provided to the users. In the aim of 'All are for users'. We are prepared to serve sincerely for all users.



ENTERPRISE HONOR



Note: 1. Valve materials are typical, however consult YaLong for detailed information if required.
2. YaLong reserves the right to modify the materials shown on this list without notice

Material Group A: 1045 Carbon Steel

Fluid Cylinder	1045 Carbon Steel with Nickel-Boron Coating
Stuffing Box	420 Stainless Steel
Adjusting Nut	Aluminum Bronze
Throat Bushing.....	Aluminum Bronze
Packing Follower Ring	Aluminum Bronze
Lantern Gland	Aluminum Bronze (if applicable)
Top Cover	420 Stainless Steel
Front Cover.....	420 Stainless Steel (if applicable)
Plunger	Tungsten-Carbide on Steel Base
Fluid End Studs.....	Alloy Steel, Nickel-Boron Coated
Fluid End Nuts	Alloy Steel, Nickel-Boron Coated
Packing.....	Braided Teflon-Kevlar
Valve Assembly1	17-4 Stainless Steel

Material Group B: 4140 Alloy Steel

Fluid Cylinder.....	4140 Alloy Steel
Stuffing Box	420 Stainless Steel
Adjusting Nut	Aluminum Bronze
Throat Bushing.....	Aluminum Bronze
Packing Follower Ring	Aluminum Bronze
Lantern Gland	Aluminum Bronze (if applicable)
Top Cover	420 Stainless Steel
Front Cover.....	420 Stainless Steel (if applicable)
Plunger	Tungsten-Carbide on Steel Base
Fluid End Studs.....	Alloy Steel, Nickel-Boron Coated
Fluid End Nuts	Alloy Steel, Nickel-Boron Coated
Packing.....	Braided Teflon-Kevlar
Valve Assembly1	17-4 Stainless Steel

Material Group C: Nickel Aluminum Bronze

Fluid Cylinder	C955 Nickel Aluminum Bronze
Stuffing Box	316 Stainless Steel
Adjusting Nut	Aluminum Bronze
Throat Bushing.....	Aluminum Bronze
Packing Follower Ring	Aluminum Bronze
Lantern Gland	Aluminum Bronze (if applicable)
Top Cover	316 Stainless Steel
Front Cover.....	316 Stainless Steel (if applicable)
Plunger	Tungsten-Carbide on 304 SS Base
Fluid End Studs.....	Alloy Steel, Nickel-Boron Coated
Fluid End Nuts	Alloy Steel, Nickel-Boron Coated
Packing.....	Braided Teflon-Kevlar
Valve Assembly1	17-4 Stainless Steel

Material Group D: 420 Stainless Steel

Fluid Cylinder	420 Stainless Steel
Stuffing Box	316 Stainless Steel
Adjusting Nut	Aluminum Bronze
Throat Bushing.....	Aluminum Bronze
Packing Follower Ring	Aluminum Bronze
Lantern Gland	Aluminum Bronze (if applicable)
Top Cover	420 Stainless Steel
Front Cover.....	420 Stainless Steel (if applicable)
Plunger	Tungsten-Carbide on Steel Base
Fluid End Studs.....	Alloy Steel, Nickel-Boron Coated
Fluid End Nuts	Alloy Steel, Nickel-Boron Coated
Packing.....	Braided Teflon-Kevlar
Valve Assembly1	17-4 Stainless Steel

STANDARD MATERIALS OF CONSTRUCTION

The information and data on this sheet is accurate to the best of our knowledge and belief, but are intended for general information only. Applications suggested for the materials are described only to help readers make their own evaluations and decisions, and are neither guarantees nor to be construed as express or implied warranties of suitability for these or other applications. YALONG makes no warranty either express or implied beyond that stipulated in YALONG Standard Terms and Conditions of Sale.

Material Group F: 316 Stainless Steel

Fluid Cylinder	316L Stainless Steel
Stuffing Box	316 Stainless Steel
Adjusting Nut	Aluminum Bronze
Throat Bushing.....	Aluminum Bronze
Packing Follower Ring	Aluminum Bronze
Lantern Gland	Aluminum Bronze (if applicable)
Top Cover	316 Stainless Steel
Front Cover.....	316 Stainless Steel (if applicable)
Plunger	Tungsten-Carbide on 304 Steel Base
Fluid End Studs.....	Alloy Steel, Nickel-Boron Coated
Fluid End Nuts	Alloy Steel, Nickel-Boron Coated
Packing.....	Braided Teflon-Kevlar
Valve Assembly1	17-4 Stainless Steel

Material Group E: 304 Stainless Steel

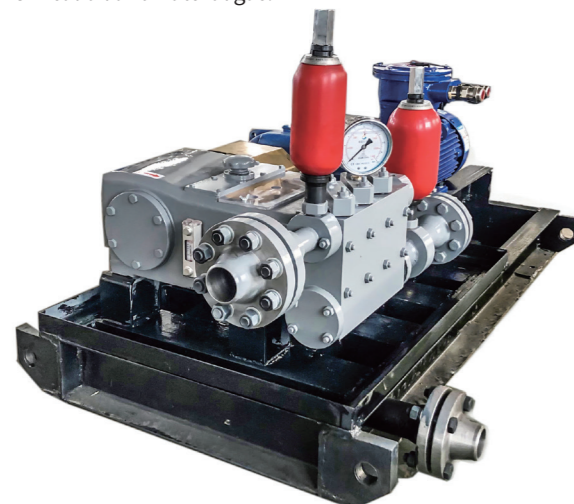
Fluid Cylinder	304 Stainless Steel
Stuffing Box	316 Stainless Steel
Adjusting Nut	Aluminum Bronze
Throat Bushing.....	Aluminum Bronze
Packing Follower Ring	Aluminum Bronze
Lantern Gland	Aluminum Bronze (if applicable)
Top Cover	2205 Stainless Steel
Front Cover.....	2205 Stainless Steel (if applicable)
Plunger	Tungsten-Carbide on 304 Steel Base
Fluid End Studs.....	Alloy Steel, Nickel-Boron Coated
Fluid End Nuts	Alloy Steel, Nickel-Boron Coated
Packing.....	Braided Teflon-Kevlar
Valve Assembly1	17-4 Stainless Steel

Material Group G: 2205 Duplex Stainless Steel

Fluid Cylinder.....	2205 Duplex Stainless Steel
Stuffing Box	2205 Stainless Steel
Adjusting Nut	Aluminum Bronze
Throat Bushing.....	Aluminum Bronze
Packing Follower Ring	Aluminum Bronze
Lantern Gland	Aluminum Bronze (if applicable)
Top Cover	2205 Stainless Steel
Front Cover.....	2205 Stainless Steel (if applicable)
Plunger	Tungsten-Carbide on 304 Steel Base
Fluid End Studs.....	Alloy Steel, Nickel-Boron Coated
Fluid End Nuts	Alloy Steel, Nickel-Boron Coated
O-Rings.....	HNBR Rubber
Packing.....	Braided Teflon-Kevlar
Valve Assembly1	17-4 Stainless Steel

T14 Triplex Plunger Pump

The YALONG Model T14 is a single acting triplex plunger pump rated at 14 HP in continuous duty services and up to 20 HP in intermittent duty. This versatile pump is offered with a variety of material and design options that make it ideal for general industrial, reverse osmosis, and typical applications involved in the production of Petrochemical oil and natural gas.



Specifications	English Units	Metric Units
Stroke Length		40 mm
Rated Rod Load	2425 lb	1200 Kg
Pump Weight	330 lb	150 Kg
Oil Capacity	1.19 gal	5.0 L
Max. Fluid Temp	284 °F	150 °C
Mechanical Efficiency		90%

Specifications	Continuous	Intermittent
Rated bhp	14 HP	20 HP
Maximum Speed	400 rpm	550 rpm
Minimum Speed	90 rpm	75 rpm
Max. plunger size x stroke length.		60x40 mm
Crankshaft extension Dia.x length		45x60 mm
Keyway (width x depth x length)		14x5.5x55 mm

Performance Ratings

(Volumes indicated are displacement of incompressible fluid)

plunger Dia.		L/RPM		Gal/RPM		Max.Press.		pump speed=90RPM			pump speed=200RPM			pump speed=300RPM			pump speed=400RPM			pump speed=500RPM			pump speed=550RPM				
mm	in	L/RPM	Gal/RPM	Mpa	Psi	LPM	GPM	M ³ /h	LPM	GPM	M ³ /h	LPM	GPM	M ³ /h	LPM	GPM	M ³ /h	LPM	GPM	M ³ /h	LPM	GPM	M ³ /h	LPM	GPM	M ³ /h	
14	0.55	0.018	0.005	80	11600	1.7	0.4	0.1	3.7	1	0.2	5.5	1.5	0.3	7.4	2	0.4	9.2	2.4	0.6	10.2	2.7	0.6				
15	0.59	0.021	0.006	63	9135	1.9	0.5	0.1	4.2	1.1	0.3	6.4	1.7	0.4	8.5	2.2	0.5	10.6	2.8	0.6	11.7	3.1	0.7				
17	0.67	0.027	0.007	50	7250	2.5	0.6	0.1	5.4	1.4	0.3	8.2	2.2	0.5	10.9	2.9	0.7	13.6	3.6	0.8	15	4	0.9				
19	0.75	0.034	0.009	40	5800	3.1	0.8	0.2	6.8	1.8	0.4	10.2	2.7	0.6	13.6	3.6	0.8	17	4.5	1	18.7	4.9	1.1				
22	0.87	0.046	0.012	32	4640	4.1	1.1	0.2	9.1	2.4	0.5	13.7	3.6	0.8	18.2	4.8	1.1	22.8	6	1.4	25.1	6.6	1.5				
25	0.98	0.059	0.016	25	3625	5.3	1.4	0.3	11.8	3.1	0.7	17.7	4.7	1.1	23.6	6.2	1.4	29.4	7.8	1.8	32.4	8.6	1.9				
28	1.1	0.074	0.02	20	2900	6.6	1.8	0.4	14.8	3.9	0.9	22.2	5.9	1.3	29.5	7.8	1.8	36.9	9.8	2.2	40.6	10.7	2.4				
31	1.22	0.091	0.024	16	2320	8.1	2.2	0.5	18.1	4.8	1.1	27.2	7.2	1.6	36.2	9.6	2.2	45.3	12	2.7	49.8	13.2	3				
35	1.38	0.115	0.03	12.5	1813	10.4	2.7	0.6	23.1	6.1	1.4	34.6	9.1	2.1	46.2	12.2	2.8	57.7	15.2	3.5	63.5	16.8	3.8				
39	1.54	0.143	0.038	10	1450	12.9	3.4	0.8	28.7	7.6	1.7	43	11.4	2.6	57.3	15.1	3.4	71.6	18.9	4.3	78.8	20.8	4.7				
44	1.73	0.182	0.048	8	1160	16.4	4.3	1	36.5	9.6	2.2	54.7	14.5	3.3	72.9	19.3	4.4	91.2	24.1	5.5	100.3	26.5	6				
50	1.97	0.236	0.062	6.3	914	21.2	5.6	1.3	47.1	12.4	2.8	70.7	18.7	4.2	94.2	24.9	5.7	117.8	31.1	7.1	129.5	34.2	7.8				
60	2.36	0.339	0.09	4	580	30.5	8.1	1.8	67.8	17.9	4.1	101.7	26.9	6.1	135.6	35.8	8.1	169.6	44.8	10.2	186.5	49.3	11.2				
Brake Horsepower Required (HP)				3.3			7.3			11			14.7 (Continuous work)			18.3			20.2								

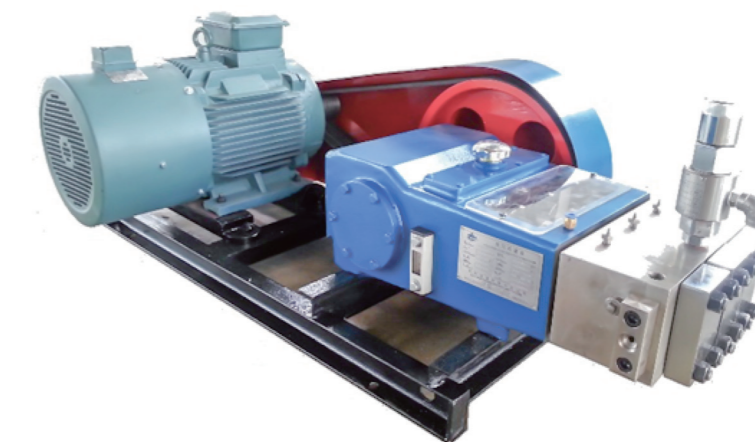
*Flows are based on 100% volumetric efficiency. Brake Horsepower /Kilowatts Required is based on 90% Mechanical Efficiency, Actual application horsepower requirements can be calculated using the equation: BHP = (GPM * PSI) / (1714 * 0.90); Consult YaLong for continuous service speeds in excess of 400 RPM.

T25 Triplex Plunger Pump

The YALONG Model T25 is a single acting triplex plunger pump rated at 25 HP in continuous duty services and up to 34 HP in intermittent duty. This versatile pump is offered with a variety of material and design options that make it ideal for general industrial, reverse osmosis, and typical applications involved in the production of Petrochemical oil and natural gas.

Specifications	English Units	Metric Units
Stroke Length		40 mm
Rated Rod Load	4960 lb	2250 Kg
Pump Weight	485 lb	220 Kg
Oil Capacity	1.32 gal	6.0 L
Max. Fluid Temp	284 °F	150 °C
Mechanical Efficiency		90%

Specifications	Continuous	Intermittent
Rated bhp	25HP	34HP
Maximum Speed	370 rpm	500 rpm
Minimum Speed	90 rpm	75 rpm
Max. plunger size x stroke length.		62x40 mm
Crankshaft extension Dia.x length		45x65 mm
Keyway (width x depth x length)		14x5.5x65 mm



Performance Ratings

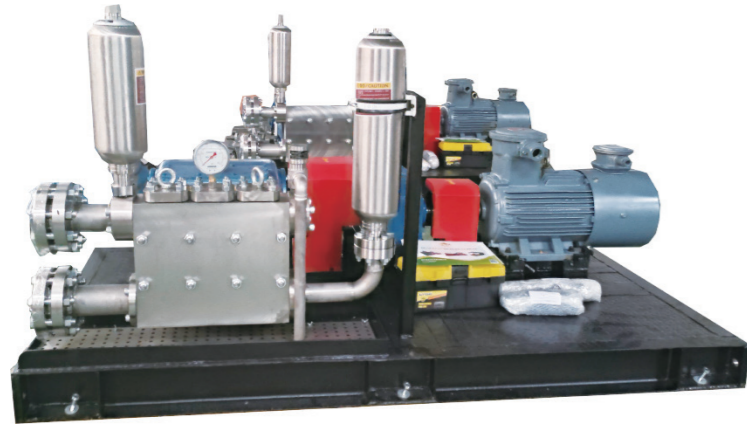
(Volumes indicated are displacement of incompressible fluid)

plunger Dia.		L/RPM		Gal/RPM		Max.Press.		pump speed=90RPM			pump speed=200RPM			pump speed=280RPM			pump speed=370RPM			pump speed=450RPM			pump speed=500RPM				
mm	in	L/RPM	Gal/RPM	Mpa	Psi	LPM	GPM	M ³ /h	LPM	GPM	M ³ /h	LPM	GPM	M ³ /h	LPM	GPM	M ³ /h	LPM	GPM	M ³ /h	LPM	GPM	M ³ /h	LPM	GPM	M ³ /h	
17	0.67	0.027	0.007	100	14500	2.5	0.6	0.1	5.4	1.4	0.3	7.6	2	0.5	10.1	2.7	0.6	12.3	3.2	0.7	13.6	3.6	0.8				
19	0.75	0.034	0.009	80	11600	3.1	0.8	0.2	6.8	1.8	0.4	9.5	2.5	0.6	12.6	3.3	0.8	15.3	4	0.9	17	4.5	1				
21	0.83	0.042	0.011	63	9135	3.7	1	0.2	8.3	2.2	0.5	11.6	3.1	0.7	15.4	4.1	0.9	18.7	4.9	1.1	20.8	5.5	1.2				
24	0.94	0.054	0.014	50	7250	4.9	1.3	0.3	10.9	2.9	0.7	15.2	4	0.9	20.1	5.3	1.2	24.4	6.5	1.5	27.1	7.2	1.6				
26	1.02	0.064	0.017	40	5800	5.7	1.5	0.3	12.7	3.4	0.8	17.8	4.7	1.1	23.6	6.2	1.4	28.7	7.6	1.7	31.8	8.4	1.9				
30	1.18	0.085	0.022	32	4640	7.6	2	0.5	17	4.5	1	23.7	6.3	1.4	31.4	8.3	1.9	38.2	10.1	2.3	42.4	11.2	2.5				
34	1.34	0.109	0.029	25	3625	9.8	2.6	0.6	21.8	5.8	1.3	30.5	8.1	1.8	40.3	10.6	2.4	49	12.9	2.9	54.4	14.4	3.3				
38	1.5	0.136	0.036	20	2900	12.2	3.2	0.7	27.2	7.2	1.6	38.1	10.1	2.3	50.3	13.3	3	61.2	16.2	3.7	68	18	4.1				
42	1.65	0.166	0.044	16	2320	15	4	0.9	33.2	8.8	2	46.5	12.3	2.8	61.5	16.2	3.7	74.8	19.8	4.5	83.1	21.9	5				
47	1.85	0.208	0.055	12.5	1813	18.7	4.9	1.1	41.6	11	2.5	58.3	15.4	3.5	77	20.3	4.6	93.6	24.7	5.6	104	27.5	6.2				
53	2.09	0.265	0.07	10	1450	23.8	6.3	1.4	52.9	14	3.2	74.1	19.6	4.4	97.9	25.9	5.9	119.1	31.5	7.1	132.3	35	7.9				
60	2.36	0.339	0.09	8	1160	30.5	8.1	1.8	67.8	17.9	4.1	95	25.1	5.7	125.5	33.1	7.5	152.6	40.3	9.2	169.6	44.8	10.2				
Brake Horsepower Required				6.1			13.5			18.9			25.0(Continuous work)			30.4			33.8								

*Flows are based on 100% volumetric efficiency. Brake Horsepower /Kilowatts Required is based on 90% Mechanical Efficiency, Actual application horsepower requirements can be calculated using the equation: BHP = (GPM * PSI) / (1714 * 0.90); Consult YaLong for continuous service speeds in excess of 370 RPM.

T65 Triplex Plunger / Piston Pump

The YALONG Model T65 is a single acting triplex plunger / piston pump rated at 65 HP in continuous duty services and up to 75 HP in intermittent duty. This versatile pump is offered with a variety of material and design options that make it ideal for general industrial, reverse osmosis, typical applications involved in the production of Petrochemical oil and natural gas, and Horizontal Directional Drilling Technologies.



Specifications	English Units	Metric Units
Stroke Length		80 mm
Rated Rod Load	6283 lb	2850 Kg
Pump Weight	1235 lb	560 Kg
Oil Capacity	2.25 gal	14 L
Max. Fluid Temp	752 °F	400 °C
Mechanical Efficiency		90%

Specifications	Continuous	Intermittent
Rated bhp	65 HP	76 HP
Maximum Speed	390 rpm	450 rpm
Minimum Speed	90 rpm	75 rpm

Max. plunger size x stroke length. 89x75 mm
 Crankshaft extension Dia.x length 70x140 mm
 Keyway (width x depth x length) 20x7.5x140 mm

Performance Ratings

(Volumes indicated are displacement of incompressible fluid)

plunger Dia.	L/RPM		Max.Press.		pump speed=90RPM			pump speed=150RPM			pump speed=250RPM			pump speed=300RPM			pump speed=390RPM			pump speed=450RPM			
	mm	in	L/RPM	Gal/RPM	Mpa	Psi	LPM	GPM	M ³ /h	LPM	GPM	M ³ /h	LPM	GPM	M ³ /h	LPM	GPM	M ³ /h	LPM	GPM	M ³ /h	LPM	GPM
24	0.94	0.109	0.029	63	9135	9.8	2.6	0.6	16.3	4.3	1	27.1	7.2	1.6	32.6	8.6	2	42.3	11.2	2.5	48.8	12.9	2.9
27	1.06	0.137	0.036	50	7250	12.4	3.3	0.7	20.6	5.4	1.2	34.3	9.1	2.1	41.2	10.9	2.5	53.6	14.2	3.2	61.8	16.3	3.7
30	1.18	0.17	0.045	40	5800	15.3	4	0.9	25.4	6.7	1.5	42.4	11.2	2.5	50.9	13.4	3.1	66.1	17.5	4	76.3	20.2	4.6
34	1.34	0.218	0.058	32	4640	19.6	5.2	1.2	32.7	8.6	2	54.4	14.4	3.3	65.3	17.3	3.9	84.9	22.4	5.1	98	25.9	5.9
38	1.5	0.272	0.072	25	3625	24.5	6.5	1.5	40.8	10.8	2.4	68	18	4.1	81.6	21.6	4.9	106.1	28	6.4	122.4	32.3	7.3
42	1.65	0.332	0.088	20	2900	29.9	7.9	1.8	49.9	13.2	3	83.1	21.9	5	99.7	26.3	6	129.6	34.2	7.8	149.6	39.5	9
47	1.85	0.416	0.11	16	2320	37.5	9.9	2.2	62.4	16.5	3.7	104	27.5	6.2	124.9	33	7.5	162.3	42.9	9.7	187.3	49.5	11.2
53	2.09	0.529	0.14	12.5	1813	47.6	12.6	2.9	79.4	21	4.8	132.3	35	7.9	158.8	41.9	9.5	206.4	54.5	12.4	238.1	62.9	14.3
60	2.36	0.678	0.179	10	1450	61	16.1	3.7	101.7	26.9	6.1	169.6	44.8	10.2	203.5	53.8	12.2	264.5	69.9	15.9	305.2	80.6	18.3
67	2.64	0.846	0.223	8	1160	76.1	20.1	4.6	126.9	33.5	7.6	211.4	55.9	12.7	253.7	67	15.2	329.8	87.1	19.8	380.6	100.5	22.8
75	2.95	1.06	0.28	6.3	914	95.4	25.2	5.7	159	42	9.5	264.9	70	15.9	317.9	84	19.1	413.3	109.2	24.8	476.9	126	28.6
85	3.35	1.361	0.36	5	725	122.5	32.4	7.4	204.2	53.9	12.3	340.3	89.9	20.4	408.4	107.9	24.5	530.9	140.2	31.9	612.5	161.8	36.8
95	3.74	1.7	0.449	4	580	153	40.4	9.2	255	67.4	15.3	425.1	112.3	25.5	510.1	134.8	30.6	663.1	175.2	39.8	765.1	202.1	45.9
Brake Horsepower Required						15.3			25.5			42.4			49.6			66.2(Continuous work)			76.4		

*Flows are based on 100% volumetric efficiency. Brake Horsepower /Kilowatts Required is based on 90% Mechanical Efficiency, Actual application horsepower requirements can be calculated using the equation: BHP = (GPM * PSI) / (1714 * 0.90); Consult YaLong for continuous service speeds in excess of 380RPM.

T68 Triplex Plunger

The YALONG Model T68 is a single acting triplex plunger pump rated at 68 HP in continuous duty services and up to 82 HP in intermittent duty. This versatile pump is offered with a variety of material and design options that make it ideal for general industrial, reverse osmosis, typical applications involved in the production of Petrochemical oil and natural gas,



Specifications	English Units	Metric Units
Stroke Length		70 mm
Rated Rod Load	7050 lb	3200 Kg
Pump Weight	683 lb	310 Kg
Oil Capacity	3.70 gal	8.5 L
Max. Fluid Temp	752 °F	400 °C
Mechanical Efficiency		90%

Specifications	Continuous	Intermittent
Rated bhp	68 HP	82 HP
Maximum Speed	410 rpm	500 rpm
Minimum Speed	90 rpm	75 rpm

Max. plunger size x stroke length. 75x70 mm
 Crankshaft extension Dia.x length 50x69 mm
 Keyway (width x depth x length) 14x5x60 mm

Performance Ratings

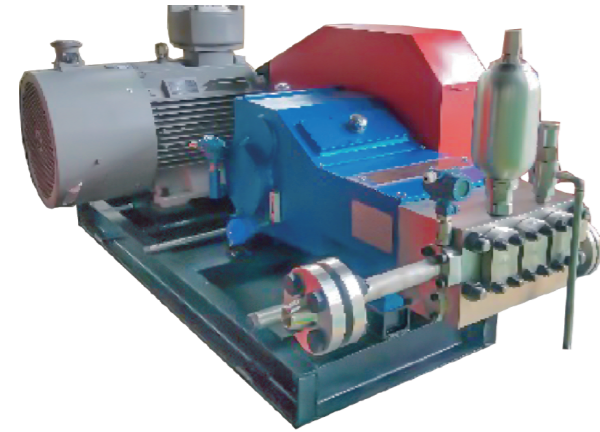
(Volumes indicated are displacement of incompressible fluid)

plunger Dia.	L/RPM		Max.Press.		pump speed=90RPM			pump speed=200RPM			pump speed=300RPM			pump speed=410RPM			pump speed=500RPM			
	mm	in	L/RPM	Gal/RPM	Mpa	Psi	LPM	GPM	M3/h	LPM	GPM	M3/h	LPM	GPM	M3/h	LPM	GPM	M3/h	LPM	GPM
12.7	0.5	0.027	0.007	250	36250	2.4	0.6	0.1	5.3	1.4	0.3	8	2.1	0.5	10.9	2.9	0.7	13.3	3.5	0.8
14	0.55	0.032	0.009	200	29000	2.9	0.8	0.2	6.5	1.7	0.4	9.7	2.6	0.6	13.2	3.5	0.8	16.2	4.3	1
16	0.63	0.042	0.011	150	21750	3.8	1	0.2	8.4	2.2	0.5	12.7	3.3	0.8	17.3	4.6	1	21.1	5.6	1.3
20	0.79	0.066	0.017	100	14500	5.9	1.6	0.4	13.2	3.5	0.8	19.8	5.2	1.2	27	7.1	1.6	33	8.7	2
22	0.87	0.08	0.021	80	11600	7.2	1.9	0.4	16	4.2	1	23.9	6.3	1.4	32.7	8.6	2	39.9	10.5	2.4
25.4	1	0.106	0.028	63	9135	9.6	2.5	0.6	21.3	5.6	1.3	31.9	8.4	1.9	43.6	11.5	2.6	53.2	14	3.2
28	1.1	0.129	0.034	50	7250	11.6	3.1	0.7	25.8	6.8	1.6	38.8	10.2	2.3	53	14	3.2	64.6	17.1	3.9
32	1.26	0.169	0.045	40	5800	15.2	4	0.9	33.8	8.9	2	50.6	13.4	3	69.2	18.3	4.2	84.4	22.3	5.1
36	1.42	0.214	0.056	31.5	4568	19.2	5.1	1.2	42.7	11.3	2.6	64.1	16.9	3.8	87.6	23.1	5.3	106.8	28.2	6.4
40	1.57	0.264	0.07	25	3625	23.7	6.3	1.4	52.8	13.9	3.2	79.1	20.9	4.7	108.1	28.6	6.5	131.9	34.8	7.9
45	1.77	0.334	0.088	20	2900	30	7.9	1.8	66.8	17.6	4	100.1	26.5	6	136.9	36.2	8.2	166.9	44.1	10
50	1.97	0.412	0.109	16	2320	37.1	9.8	2.2	82.4	21.8	4.9	123.6	32.7	7.4	169	44.6	10.1	206.1	54.4	12.4
57.15	2.25	0.538	0.142	12.5	1813	48.5	12.8	2.9	107.7	28.4	6.5	161.5	42.7	9.7	220.8	58.3	13.2	269.2	71.1	16.2
63.5	2.5	0.665	0.176	10	1450	59.8	15.8	3.6	132.9	35.1	8	199.4	52.7	12	272.5	72	16.4	332.4	87.8	19.9
71	2.8	0.831	0.22	8	1160	74.8	19.8	4.5	166.2	43.9	10	249.3	65.9	15	340.7	90	20.4	415.5	109.8	24.9
Brake Horsepower Required						14.9			33			49.5			67.7 (Continuous work)			82.5		

*Flows are based on 100% volumetric efficiency. Brake Horsepower /Kilowatts Required is based on 90% Mechanical Efficiency, Actual application horsepower requirements can be calculated using the equation: BHP = (GPM * PSI) / (1714 * 0.90); Consult YaLong for continuous service speeds in excess of 380RPM.

T100 Triplex Plunger Pump

The YALONG Model T100 is a single acting triplex plunger pump rated at 108 HP in continuous duty services and up to 127 HP in intermittent duty. This versatile pump is offered with a variety of material and design options that make it ideal for general industrial, reverse osmosis, and typical applications involved in the production of Petrochemical oil and natural gas.



Specifications	English Units	Metric Units
Stroke Length	4"	101.6 mm
Rated Rod Load	9030 lb	4100 Kg
Pump Weight	1100 lb	500 Kg
Oil Capacity	4.75 gal	18 L
Max. Fluid Temp	284 °F	150 °C
Mechanical Efficiency		90%

Specifications	Continuous	Intermittent
Rated bhp	108HP	139 HP
Maximum Speed	350 rpm	450 rpm
Minimum Speed	90 rpm	75 rpm

Max. plunger size x stroke length. 75x101.6 mm
 Crankshaft extension Dia.x length 75x90 mm
 Keyway (width x depth x length) 20x7.5x85 mm

It can be equipped with an internal reduction gear, with reduction ratios of 4.228:1.

Performance Ratings

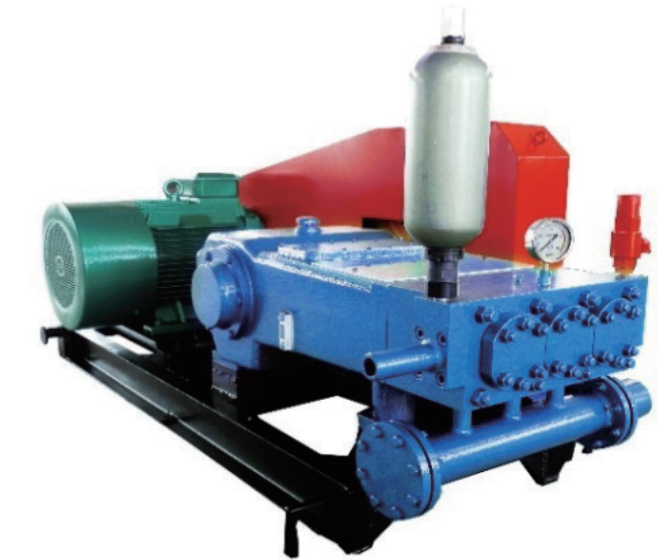
(Volumes indicated are displacement of incompressible fluid)

plunger Dia.		L/RPM		Max.Press.		pump speed=90RPM			pump speed=150RPM			pump speed=250RPM			pump speed=300RPM			pump speed=350RPM			pump speed=450RPM		
mm	in	L/RPM	Gal/RPM	Mpa	Psi	LPM	GPM	M ³ /h	LPM	GPM	M ³ /h	LPM	GPM	M ³ /h	LPM	GPM	M ³ /h	LPM	GPM	M ³ /h	LPM	GPM	M ³ /h
16	0.63	0.061	0.016	200	29000	5.5	1.5	0.3	9.2	2.4	0.6	15.3	4	0.9	18.4	4.9	1.1	21.4	5.7	1.3	27.6	7.3	1.7
18	0.71	0.078	0.02	150	21750	7	1.8	0.4	11.6	3.1	0.7	19.4	5.1	1.2	23.3	6.1	1.4	27.1	7.2	1.6	34.9	9.2	2.1
22	0.87	0.116	0.031	100	14500	10.4	2.8	0.6	17.4	4.6	1	29	7.6	1.7	34.7	9.2	2.1	40.5	10.7	2.4	52.1	13.8	3.1
25	0.98	0.15	0.04	80	11600	13.5	3.6	0.8	22.4	5.9	1.3	37.4	9.9	2.2	44.9	11.9	2.7	52.3	13.8	3.1	67.3	17.8	4
28	1.1	0.188	0.05	63	9135	16.9	4.5	1	28.1	7.4	1.7	46.9	12.4	2.8	56.3	14.9	3.4	65.7	17.3	3.9	84.4	22.3	5.1
32	1.26	0.245	0.065	50	7250	22.1	5.8	1.3	36.8	9.7	2.2	61.3	16.2	3.7	73.5	19.4	4.4	85.8	22.7	5.1	110.3	29.1	6.6
36	1.42	0.31	0.082	40	5800	27.9	7.4	1.7	46.5	12.3	2.8	77.5	20.5	4.7	93	24.6	5.6	108.5	28.7	6.5	139.5	36.9	8.4
40	1.57	0.383	0.101	31.5	4568	34.5	9.1	2.1	57.4	15.2	3.4	95.7	25.3	5.7	114.8	30.3	6.9	134	35.4	8	172.3	45.5	10.3
45	1.77	0.485	0.128	25	3625	43.6	11.5	2.6	72.7	19.2	4.4	121.1	32	7.3	145.4	38.4	8.7	169.6	44.8	10.2	218	57.6	13.1
51	2.01	0.622	0.164	20	2900	56	14.8	3.4	93.4	24.7	5.6	155.6	41.1	9.3	186.7	49.3	11.2	217.8	57.5	13.1	280.1	74	16.8
57	2.24	0.777	0.205	16	2320	70	18.5	4.2	116.6	30.8	7	194.3	51.3	11.7	233.2	61.6	14	272.1	71.9	16.3	349.8	92.4	21
64	2.52	0.98	0.259	12.5	1813	88.2	23.3	5.3	147	38.8	8.8	245	64.7	14.7	294	77.7	17.6	343	90.6	20.6	441	116.5	26.5
72	2.83	1.24	0.328	10	1450	111.6	29.5	6.7	186.1	49.2	11.2	310.1	81.9	18.6	372.1	98.3	22.3	434.1	114.7	26	521	147.5	31.3
Brake Horsepower Required						27.8			46.3			77.2			92.7			108.1 (Continuous work)			139		

*Flows are based on 100% volumetric efficiency. Brake Horsepower /Kilowatts Required is based on 90% Mechanical Efficiency, Actual application horsepower requirements can be calculated using the equation: BHP = (GPM * PSI) / (1714 * 0.90); Consult YaLong for continuous service speeds in excess of 350 RPM.

T110 Triplex Plunger / Piston Pump

The YALONG Model T110 is a single acting triplex plunger/ piston pump rated at 107 HP in continuous duty services and up to 128HP in intermittent duty. This versatile pump is offered with a variety of material and design options that make it ideal for general industrial, reverse osmosis, typical applications involved in the production of Petrochemical oil and natural gas, and Horizontal Directional Drilling Technologies.



Specifications	English Units	Metric Units
Stroke Length	4.25"	108 mm
Rated Rod Load	8932 lb	4100 Kg
Pump Weight	2425 lb	1100 Kg
Oil Capacity	6.87 gal	26 L
Max. Fluid Temp	752 °F	400°C
Mechanical Efficiency		90%

Specifications	Continuous	Intermittent
Rated bhp	110HP	128HP
Maximum Speed	350 rpm	420 rpm
Minimum Speed	90 rpm	75 rpm

Max. plunger size x stroke length. 102x100mm
 Crankshaft extension Dia.x length 88x170 mm
 Keyway (width x depth x length) 25x9x165 mm

Performance Ratings

(Volumes indicated are displacement of incompressible fluid)

plunger Dia.		L/RPM		Max.Press.		pump speed=90RPM			pump speed=150RPM			pump speed=250RPM			pump speed=300RPM			pump speed=350RPM			pump speed=420RPM		
mm	in	L/RPM	Gal/RPM	Mpa	Psi	LPM	GPM	M ³ /h	LPM	GPM	M ³ /h	LPM	GPM	M ³ /h	LPM	GPM	M ³ /h	LPM	GPM	M ³ /h	LPM	GPM	M ³ /h
28	1.1	0.185	0.049	63	9135	16.6	4.4	1	27.7	7.3	1.7	46.2	12.2	2.8	55.4	14.6	3.3	64.6	17.1	3.9	77.5	20.5	4.7
32	1.26	0.241	0.064	50	7250	21.7	5.7	1.3	36.2	9.6	2.2	60.3	15.9	3.6	72.3	19.1	4.3	84.4	22.3	5.1	101.3	26.8	6.1
36	1.42	0.305	0.081	40	5800	27.5	7.3	1.6	45.8	12.1	2.7	76.3	20.2	4.6	91.6	24.2	5.5	106.8	28.2	6.4	128.2	33.9	7.7
40	1.57	0.377	0.1	32	4640	33.9	9	2	56.5	14.9	3.4	94.2	24.9	5.7	113	29.9	6.8	131.9	34.8	7.9	158.3	41.8	9.5
45	1.77	0.477	0.126	25	3625	42.9	11.3	2.6	71.5	18.9	4.3	119.2	31.5	7.2	143.1	37.8	8.6	166.9	44.1	10	200.3	52.9	12
51	2.01	0.613	0.162	20	2900	55.1	14.6	3.3	91.9	24.3	5.5	153.1	40.5	9.2	183.8	48.5	11	214.4	56.6	12.9	257.3	68	15.4
57	2.24	0.765	0.202	16	2320	68.9	18.2	4.1	114.8	30.3	6.9	191.3	50.5	11.5	229.5	60.6	13.8	267.8	70.7	16.1	321.4	84.9	19.3
64	2.52	0.965	0.255	12.5	1813	86.8	22.9	5.2	144.7	38.2	8.7	241.2	63.7	14.5	289.4	76.4	17.4	337.6	89.2	20.3	405.1	107	24.3
72	2.83	1.221	0.323	10	1450	109.9	29	6.6	183.1	48.4	11	305.2	80.6	18.3	366.2	96.8	22	427.3	112.9	25.6	512.7	135.5	30.8
80	3.15	1.507	0.398	8	1160	135.6	35.8	8.1	226.1	59.7	13.6	376.8	99.5	22.6	452.2	119.4	27.1	527.5	139.4	31.7	633	167.2	38
91	3.58	1.95	0.515	6.3	914	175.5	46.4	10.5	292.5	77.3	17.6	487.5	128.8	29.3	585.1	154.6	35.1	682.6	180.3	41	819.1	216.4	49.1
102	4.02	2.45	0.647	5	725	220.5	58.3	13.2	367.5	97.1	22.1	612.5	161.8	36.8	735	194.2	44.1	857.5	226.5	51.5	1029.1	271.8	61.7
Brake Horsepower Required						27.5			45.8			76.3			91.5			106.8 (Continuous work)			128.1		

*Flows are based on 100% volumetric efficiency. Brake Horsepower /Kilowatts Required is based on 90% Mechanical Efficiency, Actual application horsepower requirements can be calculated using the equation: BHP = (GPM * PSI) / (1714 * 0.90); Consult YaLong for continuous service speeds in excess of 350 RPM.

T150 Triplex Plunger Pump

The YALONG Model T150 is a single acting triplex plunger pump rated at 153 HP in continuous duty services and up to 202 HP in intermittent duty. This versatile pump is offered with a variety of material and design options that make it ideal for general industrial, reverse osmosis, and typical applications involved in the production of Petrochemical oil and natural gas.



Specifications	English Units	Metric Units
Stroke Length	3.75 in	95 mm
Rated Rod Load	12786 lb	5800 Kg
Pump Weight	1984 lb	900 Kg
Oil Capacity	10 gal	38 L
Max. Fluid Temp	752 °F	400 °C
Mechanical Efficiency		90%

Specifications	Continuous	Intermittent
Rated bhp	153HP	202 HP
Maximum Speed	375 rpm	495 rpm
Minimum Speed	90 rpm	75 rpm

Max. plunger size x stroke length. 101x80mm
Crankshaft extension Dia.x length 86x153 mm
Keyway (width x depth x length) 25x9x145 mm

Performance Ratings

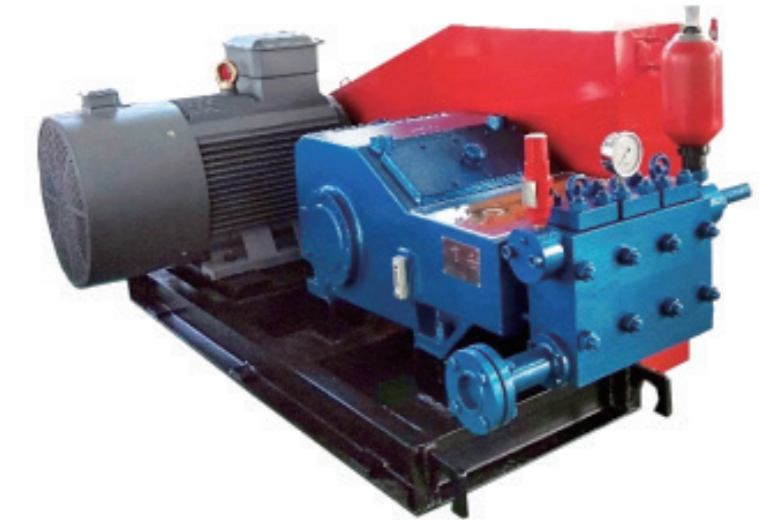
(Volumes indicated are displacement of incompressible fluid)

Plunger Dia.	L/RPM	Gal/RPM	rated pressure		rpm=90			rpm=150			rpm=300			rpm=375			rpm=450			rpm=495				
			Mpa	Psi	LPM	GPM	M ³ /h	LPM	GPM	M ³ /h	LPM	GPM	M ³ /h	LPM	GPM	M ³ /h	LPM	GPM	M ³ /h	LPM	GPM	M ³ /h		
27	1.06	0.163	0.043	100	14500	14.7	3.9	0.9	24.5	6.5	1.5	48.9	12.9	2.9	60.3	16.2	3.6	73.4	19.4	4.4	80.7	21.3	4.8	
30	1.18	0.201	0.053	80	11600	18.1	4.8	1.1	30.2	8	1.8	60.4	16	3.6	74.5	19.9	4.5	90.6	23.9	5.4	99.7	26.3	6	
34	1.34	0.259	0.068	63	9135	23.3	6.1	1.4	38.8	10.2	2.3	77.6	20.5	4.7	95.7	25.6	5.7	116.4	30.7	7	128	33.8	7.7	
38	1.5	0.323	0.085	50	7250	29.1	7.7	1.7	48.5	12.8	2.9	96.9	25.6	5.8	119.5	32	7.2	145.4	38.4	8.7	159.9	42.2	9.6	
42	1.65	0.395	0.104	40	5800	35.5	9.4	2.1	59.2	15.6	3.6	118.4	31.3	7.1	146	39.1	8.8	177.6	46.9	10.7	195.4	51.6	11.7	
48	1.89	0.515	0.136	32	4640	46.4	12.3	2.8	77.3	20.4	4.6	154.6	40.9	9.3	190.7	51.1	11.4	232	61.3	13.9	255.2	67.4	15.3	
54	2.13	0.652	0.172	25	3625	58.7	15.5	3.5	97.9	25.9	5.9	195.7	51.7	11.7	241.4	64.6	14.5	293.6	77.6	17.6	322.9	85.3	19.4	
60	2.36	0.805	0.213	20	2900	72.5	19.1	4.3	120.8	31.9	7.2	241.6	63.8	14.5	298	79.8	17.9	362.4	95.7	21.7	398.7	105.3	23.9	
67	2.64	1.004	0.265	16	2320	90.4	23.9	5.4	150.6	39.8	9	301.3	79.6	18.1	371.6	99.5	22.3	451.9	119.4	27.1	497.1	131.3	29.8	
76	2.99	1.292	0.341	12.5	1813	116.3	30.7	7	193.8	51.2	11.6	387.7	102.4	23.3	478.1	128	28.7	581.5	153.6	34.9	639.7	169	38.4	
85	3.35	1.616	0.427	10	1450	145.5	38.4	8.7	242.5	64.1	14.5	484.9	128.1	29.1	598.1	160.1	35.9	727.4	192.2	43.6	800.1	211.4	48	
96	3.78	2.062	0.545	8	1160	185.6	49	11.1	309.3	81.7	18.6	618.6	163.4	37.1	762.9	204.3	45.8	927.8	245.1	55.7				
101	3.98	2.282	0.603	6.3	914	205.4	54.3	12.3	342.3	90.4	20.5	684.7	180.9	41.1	844.4	226.1	50.7							
Brake Horsepower Required (HP)							36.9		61.4		122.8		153.6 (Continuous work)		184.3		202.7							

*Flows are based on 100% volumetric efficiency. Brake Horsepower /Kilowatts Required is based on 90% Mechanical Efficiency, Actual application horsepower requirements can be calculated using the equation: BHP = (GPM * PSI) / (1714 * 0.90); Consult YaLong for continuous service speeds in excess of 375 RPM.

T175 Triplex Plunger Pump

The YALONG Model T175 is a single acting triplex plunger pump rated at 193 HP in continuous duty services and up to 235HP in intermittent duty. This versatile pump is offered with a variety of material and design options that make it ideal for general industrial, reverse osmosis, and typical applications involved in the production of Petrochemical oil and natural gas.



Specifications	English Units	Metric Units
Stroke Length	4.134 in	105 mm
Rated Rod Load	14597 lb	6700 Kg
Pump Weight	2200 lb	990 Kg
Oil Capacity	10 gal	45 L
Max. Fluid Temp	752 °F	400 °C
Mechanical Efficiency		90%

Specifications	Continuous	Intermittent
Rated bhp	193HP	235 HP
Maximum Speed	370 rpm	450 rpm
Minimum Speed	90 rpm	75 rpm

Max. plunger size x stroke length. 105x105mm
Crankshaft extension Dia.x length 103x200 mm
Keyway (width x depth x length) 28x10x180 mm

Performance Ratings

(Volumes indicated are displacement of incompressible fluid)

Plunger Dia.	L/RPM	Gal/RPM	rated pressure		rpm=90			rpm=150			rpm=265			rpm=300			rpm=370			rpm=450			
			Mpa	Psi	LPM	GPM	m ³ /h	LPM	GPM	m ³ /h	LPM	GPM	m ³ /h	LPM	GPM	m ³ /h	LPM	GPM	m ³ /h	LPM	GPM	m ³ /h	
24	0.94	0.142	0.038	150	21750	12.8	3.4	0.8	21.4	5.6	1.3	37.7	10	2.3	42.7	11.3	2.6	52.7	13.9	3.2	64.1	16.9	3.8
29	1.14	0.208	0.055	100	14500	18.7	4.9	1.1	31.2	8.2	1.9	55.1	14.6	3.3	62.4	16.5	3.7	76.9	20.3	4.6	93.6	24.7	5.6
32	1.26	0.253	0.067	80	11600	22.8	6	1.4	38	10	2.3	67.1	17.7	4	76	20.1	4.6	93.7	24.7	5.6	113.9	30.1	6.8
36	1.42	0.32	0.085	63	9135	28.8	7.6	1.7	48.1	12.7	2.9	84.9	22.4	5.1	96.1	25.4	5.8	118.6	31.3	7.1	144.2	38.1	8.7
41	1.61	0.416	0.11	50	7250	37.4	9.9	2.2	62.4	16.5	3.7	110.2	29.1	6.6	124.7	32.9	7.5	153.8	40.6	9.2	187.1	49.4	11.2
46	1.81	0.523	0.138	40	5800	47.1	12.4	2.8	78.5	20.7	4.7	138.7	36.6	8.3	157	41.5	9.4	193.6	51.1	11.6	235.5	62.2	14.1
52	2.05	0.669	0.177	31.5	4568	60.2	15.9	3.6	100.3	26.5	6	177.2	46.8	10.6	200.6	53	12	247.4	65.4	14.8	300.9	79.5	18.1
58	2.28	0.832	0.22	25	3625	74.9	19.8	4.5	124.8	33	7.5	220.4	58.2	13.2	249.5	65.9	15	307.8	81.3	18.5	374.3	98.9	22.5
65	2.56	1.045	0.276	20	2900	94	24.8	5.6	156.7	41.4	9.4	276.9	73.1	16.6	313.4	82.8	18.8	386.6	102.1	23.2	470.1	124.2	28.2
73	2.87	1.318	0.348	16	2320	118.6	31.3	7.1	197.7	52.2	11.9	349.2	92.2	21	395.3	104.4	23.7	487.6	128.8	29.3	593	156.6	35.6
82	3.23	1.663	0.439	12.5	1813	149.6	39.5	9	249.4	65.9	15	440.6	116.4	26.4	498.8	131.8	29.9	615.2	162.5	36.9	748.2	197.7	44.9
92	3.62	2.093	0.553	10	1450	188.4	49.8	11.3	313.9	82.9	18.8	554.6	146.5	33.3	627.9	165.9	37.7	774.4	204.6	46.5	941.8	248.8	56.5
103	4.06	2.623	0.693	8	1160	236.1	62.4	14.2	393.5	104	23.6	695.2	183.6	41.7	787	207.9	47.2	970.6	256.4	58.2	1180.5	311.9	70.8
Brake Horsepower Required							47.1																

*Flows are based on 100% volumetric efficiency. Brake Horsepower /Kilowatts Required is based on 90% Mechanical Efficiency, Actual application horsepower requirements can be calculated using the equation: BHP = (GPM * PSI) / (1714 * 0.90); Consult YaLong for continuous service speeds in excess of 370 RPM.

T185 Triplex Plunger Pump

The YALONG Model T185 is a single acting triplex plunger pump rated at 186 HP in continuous duty services and up to 217HP in intermittent duty. This versatile pump is offered with a variety of material and design options that make it ideal for general industrial, reverse osmosis, and typical applications involved in the production of Petrochemical oil and natural gas.



Specifications	English Units	Metric Units
Stroke Length	5 in	127 mm
Rated Rod Load	11982 lb	5500 Kg
Pump Weight	2200 lb	990 Kg
Oil Capacity	17.2 gal	65 L
Max. Fluid Temp	752 °F	400 °C
Mechanical Efficiency		90%

Specifications	Continuous	Intermittent
Rated bhp	186HP	217 HP
Maximum Speed	360 rpm	420 rpm
Minimum Speed	90rpm	75 rpm

Max. plunger size x stroke length. 105x127mm
Crankshaft extension Dia.x length
Keyway (width x depth x length)

Performance Ratings

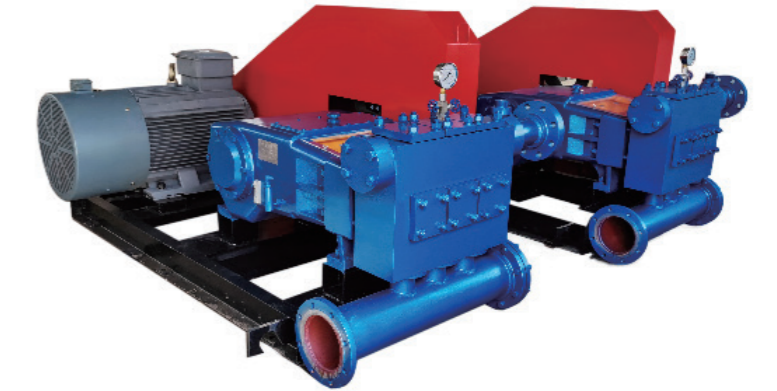
(Volumes indicated are displacement of incompressible fluid)

plunger Dia.		L/RPM		Max.Press.		pump speed=90RPM			pump speed=150RPM			pump speed=250RPM			pump speed=300RPM			pump speed=360RPM			pump speed=420RPM		
mm	in	L/RPM	Gal/RPM	Mpa	Psi	LPM	GPM	M ³ /h	LPM	GPM	M ³ /h	LPM	GPM	M ³ /h	LPM	GPM	M ³ /h	LPM	GPM	M ³ /h	LPM	GPM	M ³ /h
26	1.02	0.202	0.053	100	14500	18.2	4.8	1.1	30.3	8	1.8	50.5	13.4	3	60.7	16	3.6	72.8	19.2	4.4	84.9	22.4	5.1
29	1.14	0.252	0.066	80	11600	22.6	6	1.4	37.7	10	2.3	62.9	16.6	3.8	75.5	19.9	4.5	90.6	23.9	5.4	105.6	27.9	6.3
33	1.3	0.326	0.086	63	9135	29.3	7.7	1.8	48.9	12.9	2.9	81.4	21.5	4.9	97.7	25.8	5.9	117.3	31	7	136.8	36.1	8.2
37	1.46	0.409	0.108	50	7250	36.9	9.7	2.2	61.4	16.2	3.7	102.4	27	6.1	122.8	32.4	7.4	147.4	38.9	8.8	172	45.4	10.3
41	1.61	0.503	0.133	40	5800	45.2	12	2.7	75.4	19.9	4.5	125.7	33.2	7.5	150.8	39.8	9	181	47.8	10.9	211.2	55.8	12.7
47	1.85	0.661	0.175	31.5	4568	59.5	15.7	3.6	99.1	26.2	5.9	165.2	43.6	9.9	198.2	52.4	11.9	237.8	62.8	14.3	277.5	73.3	16.6
52	2.05	0.809	0.214	25	3625	72.8	19.2	4.4	121.3	32	7.3	202.2	53.4	12.1	242.6	64.1	14.6	291.1	76.9	17.5	339.7	89.7	20.4
59	2.32	1.041	0.275	20	2900	93.7	24.8	5.6	156.2	41.3	9.4	260.3	68.8	15.6	312.3	82.5	18.7	374.8	99	22.5	437.3	115.5	26.2
66	2.6	1.303	0.344	16	2320	117.3	31	7	195.4	51.6	11.7	325.7	86	19.5	390.8	103.2	23.5	469	123.9	28.1	547.2	144.5	32.8
74	2.91	1.638	0.433	12.5	1813	147.4	38.9	8.8	245.7	64.9	14.7	409.4	108.2	24.6	491.3	129.8	29.5	589.6	155.8	35.4	687.9	181.7	41.3
83	3.27	2.06	0.544	10	1450	185.4	49	11.1	309.1	81.6	18.5	515.1	136.1	30.9	618.1	163.3	37.1	741.7	195.9	44.5	865.4	228.6	51.9
93	3.66	2.587	0.683	8	1160	232.8	61.5	14	388	102.5	23.3	646.7	170.8	38.8	776	205	46.6	931.2	246	55.9	1086.5	287	65.2
105	4.13	3.297	0.871	6.3	914	296.8	78.4	17.8	494.6	130.7	29.7	824.4	217.8	49.5	989.2	261.3	59.4	1187.1	313.6	71.2	1384.9	365.9	83.1
Brake Horsepower Required						46.5			77.5			129.2			155			186.0(Continuous work)			217		

*Flows are based on 100% volumetric efficiency. Brake Horsepower /Kilowatts Required is based on 90% Mechanical Efficiency, Actual application horsepower requirements can be calculated using the equation: BHP = (GPM * PSI) / (1714 * 0.90); Consult YaLong for continuous service speeds in excess of 360 RPM.

T190 Triplex Plunger/Piston Pump

The YALONG Model T190 is a single acting triplex plunger/piston pump rated at 198HP in continuous duty services and up to 227HP in intermittent duty. This versatile pump is offered with a variety of material and design options that make it ideal for general industrial, reverse osmosis, typical applications involved in the production of Petrochemical oil and natural gas, and Horizontal Directional Drilling Technologies.



Specifications	English Units	Metric Units
Stroke Length	5"	125 mm
Rated Rod Load	13448 lb	6100 Kg
Pump Weight	3750 lb	1700 Kg
Oil Capacity	12.6 gal	48 L
Max. Fluid Temp	752°F	400°C
Mechanical Efficiency		90%

Specifications	Continuous	Intermittent
Rated bhp	198 HP	227 HP
Maximum Speed	350 rpm	400 rpm
Minimum Speed	90 rpm	75 rpm

Max. plunger size x stroke length. 137x125mm
Crankshaft extension Dia.x length 100x200 mm
Keyway (width x depth x length) 28x10x180 mm

Performance Ratings

(Volumes indicated are displacement of incompressible fluid)

plunger Dia.		L/RPM		Max.Press.		pump speed=90RPM			pump speed=150RPM			pump speed=200RPM			pump speed=250RPM			pump speed=350RPM			pump speed=400RPM		
mm	in	L/RPM	Gal/RPM	Mpa	Psi	LPM	GPM	M ³ /h	LPM	GPM	M ³ /h	LPM	GPM	M ³ /h	LPM	GPM	M ³ /h	LPM	GPM	M ³ /h	LPM	GPM	M ³ /h
35	1.38	0.361	0.095	63	9135	32.5	8.6	1.9	54.1	14.3	3.2	72.1	19.1	4.3	90.2	23.8	5.4	126.2	33.3	7.6	144.2	38.1	8.7
39	1.54	0.448	0.118	50	7250	40.3	10.6	2.4	67.2	17.7	4	89.5	23.7	5.4	111.9	29.6	6.7	156.7	41.4	9.4	179.1	47.3	10.7
44	1.73	0.57	0.151	40	5800	51.3	13.5	3.1	85.5	22.6	5.1	114	30.1	6.8	142.5	37.6	8.5	199.5	52.7	12	228	60.2	13.7
49	1.93	0.707	0.187	32	4640	63.6	16.8	3.8	106	28	6.4	141.4	37.3	8.5	176.7	46.7	10.6	247.4	65.3	14.8	282.7	74.7	17
55	2.17	0.89	0.235	25	3625	80.1	21.2	4.8	133.6	35.3	8	178.1	47	10.7	222.6	58.8	13.4	311.7	82.3	18.7	356.2	94.1	21.4
62	2.44	1.132	0.299	20	2900	101.8	26.9	6.1	169.7	44.8	10.2	226.3	59.8	13.6	282.9	74.7	17	396.1	104.6	23.8	452.6	119.6	27.2
69	2.72	1.402	0.37	16	2320	126.1	33.3	7.6	210.2	55.5	12.6	280.3	74	16.8	350.4	92.6	21	490.5	129.6	29.4	560.6	148.1	33.6
78	3.07	1.791	0.473	12.5	1813	161.2	42.6	9.7	268.6	71	16.1	358.2	94.6	21.5	447.7	118.3	26.9	626.8	165.6	37.6	716.4	189.2	43
88	3.46	2.28	0.602	10	1450	205.2	54.2	12.3	341.9	90.3	20.5	455.9	120.4	27.4	569.9	150.6	34.2	797.9	210.8	47.9	911.9	240.9	54.7
98	3.86	2.827	0.747	8	1160	254.4	67.2	15.3	424.1	112	25.4	565.4	149.4	33.9	706.8	186.7	42.4	989.5	261.4	59.4	1130.9	298.7	67.9
111	4.37	3.627	0.958	6.3	914	326.4	86.2	19.6	544	143.7	32.6	725.4	191.6	43.5	906.7	239.5	54.4	1269.4	335.4	76.2	1450.8	383.3	87
139	5.47	5.688	1.502	4	580	511.9	135.2	30.7	853.1	225.4	51.2	1137.5	300.5	68.3	1421.9	375.6	85.3	1990.7	525.9	119.4	2275	601	136.5
Brake Horsepower Required						51.1			85.1			113.4			141.8			198.5 (Continuous work)			226.9		

*Flows are based on 100% volumetric efficiency. Brake Horsepower /Kilowatts Required is based on 90% Mechanical Efficiency, Actual application horsepower requirements can be calculated using the equation: BHP = (GPM * PSI) / (1714 * 0.90); Consult YaLong for continuous service speeds in excess of 350 RPM.

T550 Triplex Plunger/Piston Pump

The YALONG Model T550 is a single acting triplex plunger/piston pump rated at 556 HP in continuous duty services and up to 601HP in intermittent duty. This versatile pump is offered with a variety of material and design options that make it ideal for general industrial, typical applications involved in the production of Petrochemical oil and natural gas, and Horizontal Directional Drilling Technologies.



Specifications	English Units	Metric Units
Stroke Length	7.087 in	127 mm
Rated Rod Load	35274 lb	16000 Kg
Pump Weight	10457 lb	2400 Kg
Oil Capacity	22 gal	80 L
Max. Fluid Temp	752 °F	400 °C
Mechanical Efficiency		90%

Specifications	Continuous	Intermittent
Rated bhp	556HP	601HP
Maximum Speed	370 rpm	400 rpm
Minimum Speed	75rpm	50 rpm

Performance Ratings

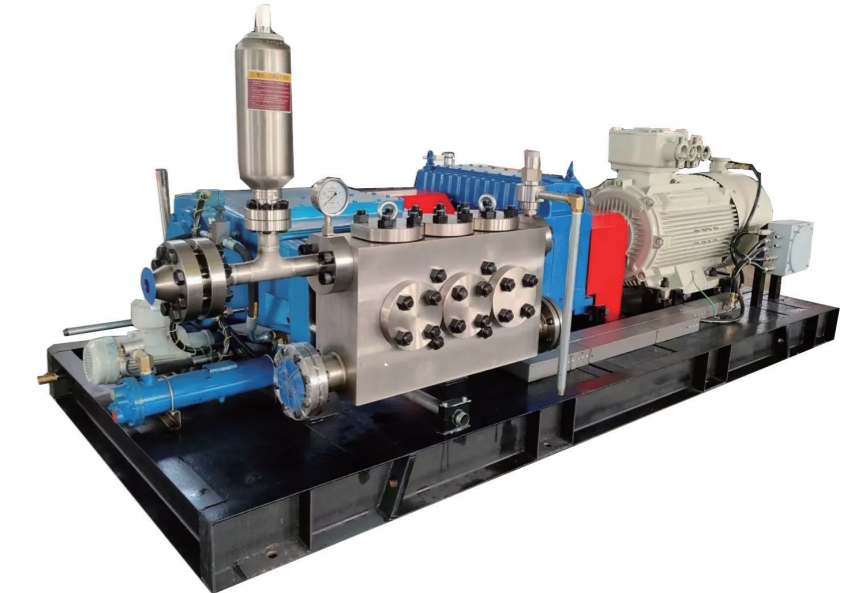
(Volumes indicated are displacement of incompressible fluid)

plunger Dia.		L/RPM		Max.Press.		pump speed=90RPM			pump speed=150RPM			pump speed=200RPM			pump speed=310RPM			pump speed=370RPM			pump speed=400RPM		
mm	in	L/RPM	Gal/RPM	Mpa	Psi	LPM	GPM	M ³ /h	LPM	GPM	M ³ /h	LPM	GPM	M ³ /h	LPM	GPM	M ³ /h	LPM	GPM	M ³ /h	LPM	GPM	M ³ /h
45	1.77	0.606	0.16	100	14500	54.5	14.4	3.3	90.8	24	5.5	121.1	32	7.3	187.8	49.6	11.3	224.1	59.2	13.4	242.3	64	14.5
50	1.97	0.748	0.198	80	11600	67.3	17.8	4	112.2	29.6	6.7	149.5	39.5	9	231.8	61.2	13.9	276.7	73.1	16.6	299.1	79	17.9
56	2.2	0.938	0.248	63	9135	84.4	22.3	5.1	140.7	37.2	8.4	187.6	49.6	11.3	290.8	76.8	17.4	347	91.7	20.8	375.2	99.1	22.5
63.5	2.5	1.206	0.319	50	7250	108.5	28.7	6.5	180.9	47.8	10.9	241.2	63.7	14.5	373.9	98.8	22.4	446.2	117.9	26.8	482.4	127.4	28.9
71	2.8	1.508	0.398	40	5800	135.7	35.8	8.1	226.2	59.7	13.6	301.5	79.7	18.1	467.4	123.5	28	557.8	147.4	33.5	603.1	159.3	36.2
80	3.15	1.914	0.506	31.5	4568	172.3	45.5	10.3	287.1	75.8	17.2	382.8	101.1	23	593.4	156.8	35.6	708.2	187.1	42.5	765.7	202.3	45.9
90	3.54	2.423	0.64	25	3625	218	57.6	13.1	363.4	96	21.8	484.5	128	29.1	751	198.4	45.1	896.4	236.8	53.8	969	256	58.1
100	3.94	2.991	0.79	20	2900	269.2	71.1	16.2	448.6	118.5	26.9	598.2	158	35.9	927.2	244.9	55.6	1106.6	292.3	66.4	1196.3	316	71.8
112	4.41	3.752	0.991	16	2320	337.7	89.2	20.3	562.8	148.7	33.8	750.3	198.2	45	1163	307.2	69.8	1388.1	366.7	83.3	1500.7	396.4	90
127	5	4.824	1.274	12.5	1813	434.2	114.7	26	723.6	191.2	43.4	964.8	254.9	57.9	1495.4	395	89.7	1784.9	471.5	107.1	1929.6	509.7	115.8
142	5.59	6.031	1.593	10	1450	542.8	143.4	32.6	904.6	239	54.3	1206.1	318.6	72.4	1869.5	493.9	112.2	2231.4	589.5	133.9			
159	6.26	7.561	1.997	8	1160	680.5	179.8	40.8	1134.2	299.6	68.1	1512.2	399.5	90.7	2344	619.2	140.6						
Brake Horsepower Required						135.3			225.5			300.7			466.1			556.3 (Continuous work)			601.4		

*Flows are based on 100% volumetric efficiency. Brake Horsepower /Kilowatts Required is based on 90% Mechanical Efficiency, Actual application horsepower requirements can be calculated using the equation: BHP = (GPM * PSI) / (1714 * 0.90); Consult YaLong for continuous service speeds in excess of 370 RPM.

T560 Triplex Plunger/Piston Pump

The YALONG Model T560 is a single acting triplex plunger/piston pump rated at 565 HP in continuous duty services and up to 650HP in intermittent duty. This versatile pump is offered with a variety of material and design options that make it ideal for general industrial, typical applications involved in the production of Petrochemical oil and natural gas, and Horizontal Directional Drilling Technologies.



Specifications	English Units	Metric Units
Stroke Length	7.087 in	180 mm
Rated Rod Load	39215 lb	18000 Kg
Pump Weight	10457 lb	4800 Kg
Oil Capacity	36 gal	135 L
Max. Fluid Temp	752 °F	400 °C
Mechanical Efficiency		90%

Specifications	Continuous	Intermittent
Rated bhp	565HP	642HP
Maximum Speed	235 rpm	267 rpm
Minimum Speed	75rpm	50 rpm

Max. plunger size x stroke length.
Crankshaft extension Dia.x length
Keyway (width x depth x length)

170x180mm

Performance Ratings

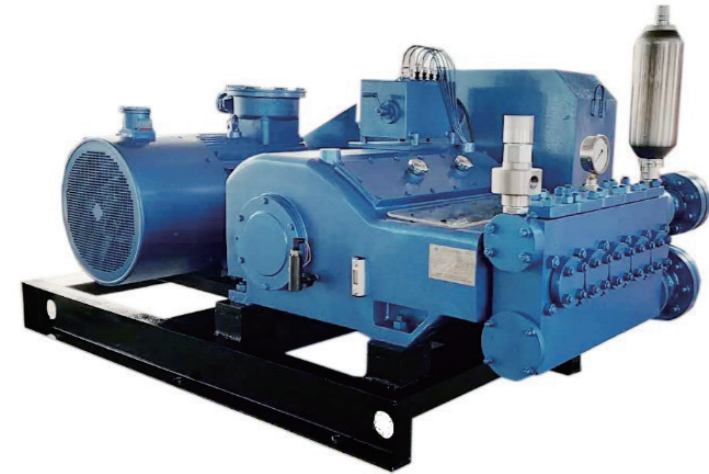
(Volumes indicated are displacement of incompressible fluid)

plunger Dia.		L/RPM		Max.Press.		pump speed=90RPM			pump speed=150RPM			pump speed=200RPM			pump speed=235RPM			pump speed=267RPM		
mm	in	L/RPM	Gal/RPM	Mpa	Psi	LPM	GPM	M ³ /h	LPM	GPM	M ³ /h	LPM	GPM	M ³ /h	LPM	GPM	M ³ /h	LPM	GPM	M ³ /h
60	2.36	1.526	0.403	63	9135	137.3	36.3	8.2	228.9	60.5	13.7	305.2	80.6	18.3	358.6	94.7	21.5	407.5	107.6	24.4
67	2.64	1.903	0.503	50	7250	171.3	45.2	10.3	285.4	75.4	17.1	380.6	100.5	22.8	447.2	118.1	26.8	508.1	134.2	30.5
75	2.95	2.384	0.63	40	5800	214.6	56.7	12.9	357.7	94.5	21.5	476.9	126	28.6	560.3	148	33.6	636.6	168.2	38.2
85	3.35	3.063	0.809	32	4640	275.6	72.8	16.5	459.4	121.4	27.6	612.5	161.8	36.8	719.7	190.1	43.2	817.7	216	49.1
95	3.74	3.826	1.011	25	3625	344.3	91	20.7	573.9	151.6	34.4	765.1	202.1	45.9	899	237.5	53.9	1021.5	269.8	61.3
107	4.21	4.853	1.282	20	2900	436.8	115.4	26.2	728	192.3	43.7	970.6	256.4	58.2	1140.5	301.3	68.4	1295.8	342.3	77.7
119	4.69	6.003	1.586	16	2320	540.3	142.7	32.4	900.4	237.9	54	1200.6	317.2	72	1410.7	372.7	84.6	1602.8	423.4	96.2
135	5.31	7.726	2.041	12.5	1813	695.3	183.7	41.7	1158.8	306.1	69.5	1545.1	408.2	92.7	1815.5	479.6	108.9	2062.7	544.9	123.8
151	5.94	9.665	2.553	10	1450	869.9	229.8	52.2	1449.8	383	87	1933.1	510.7	116	2271.4	600	136.3	2580.6	681.7	154.8
169	6.65	12.107	3.198	8	1160	1089.6	287.8	65.4	1816.1	479.7	109	2421.4	639.7	145.3	2845.1	751.6	170.7			
Brake Horsepower Required						216.4			360.7			480.9			565.0 (Continuous work)			642		

*Flows are based on 100% volumetric efficiency. Brake Horsepower /Kilowatts Required is based on 90% Mechanical Efficiency, Actual application horsepower requirements can be calculated using the equation: BHP = (GPM * PSI) / (1714 * 0.90); Consult YaLong for continuous service speeds in excess of 240 RPM.

Q290 Quintuplex Plunger Pump

The YALONG Model Q290 is a single acting quintuplex plunger pump rated at 329 HP in continuous duty services and up to 369 HP in intermittent duty. This versatile pump is offered with a variety of material and design options that make it ideal for general industrial, reverse osmosis, typical applications involved in the production of Petrochemical oil and natural gas, and Horizontal Directional Drilling Technologies.



Specifications	English Units	Metric Units
Stroke Length	3.5 in	89 mm
Rated Rod Load	14880 lb	6750 Kg
Pump Weight	3086 lb	1400 Kg
Oil Capacity	18.8 gal	71 L
Max. Fluid Temp	284 °F	150 °C
Mechanical Efficiency		90%

Specifications	Continuous	Intermittent
Rated bhp	329 HP	369 HP
Maximum Speed	440 rpm	500 rpm
Minimum Speed	90 rpm	75 rpm

Max. plunger size x stroke length. 101x89mm
Crankshaft extension Dia.x length 103x223 mm
Keyway (width x depth x length) 28x10x214 mm

Performance Ratings

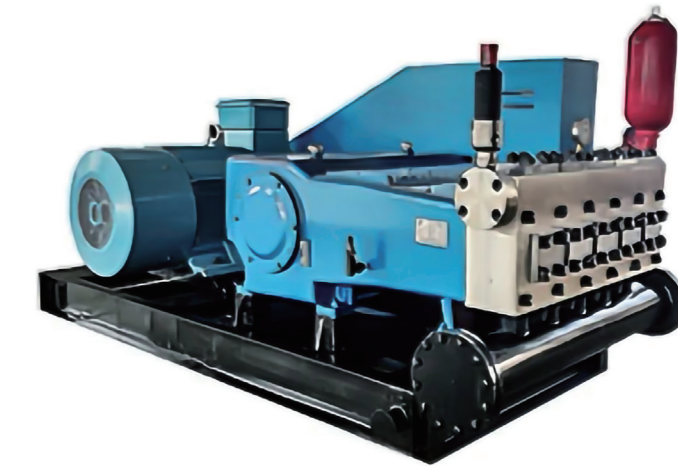
(Volumes indicated are displacement of incompressible fluid)

plunger Dia.		L/RPM		Max.Press.		pump speed=90RPM			pump speed=200RPM			pump speed=250RPM			pump speed=300RPM			pump speed=440RPM			pump speed=500RPM		
mm	in	L/RPM	Gal/RPM	Mpa	Psi	LPM	GPM	M³/h	LPM	GPM	M³/h	LPM	GPM	M³/h	LPM	GPM	M³/h	LPM	GPM	M³/h	LPM	GPM	M³/h
20	0.79	0.14	0.037	200	29000	12.6	3.3	0.8	27.9	7.4	1.7	34.9	9.2	2.1	41.9	11.1	2.5	58.7	15.5	3.5	69.9	18.5	4.2
24	0.94	0.201	0.053	150	21750	18.1	4.8	1.1	40.2	10.6	2.4	50.3	13.3	3	60.4	15.9	3.6	88.5	23.4	5.3	100.6	26.6	6
29	1.14	0.294	0.078	100	14500	26.4	7	1.6	58.8	15.5	3.5	73.4	19.4	4.4	88.1	23.3	5.3	129.3	34.1	7.8	146.9	38.8	8.8
32	1.26	0.358	0.094	80	11600	32.2	8.5	1.9	71.5	18.9	4.3	89.4	23.6	5.4	107.3	28.3	6.4	157.4	41.6	9.4	178.9	47.2	10.7
37	1.46	0.478	0.126	63	9135	43	11.4	2.6	95.6	25.3	5.7	119.6	31.6	7.2	143.5	37.9	8.6	210.4	55.6	12.6	239.1	63.2	14.3
41	1.61	0.587	0.155	50	7250	52.8	14	3.2	117.4	31	7	146.8	38.8	8.8	176.2	46.5	10.6	258.4	68.3	15.5	293.6	77.6	17.6
46	1.81	0.739	0.195	40	5800	66.5	17.6	4	147.8	39.1	8.9	184.8	48.8	11.1	221.8	58.6	13.3	325.2	85.9	19.5	369.6	97.6	22.2
52	2.05	0.945	0.25	31.5	4568	85	22.5	5.1	188.9	49.9	11.3	236.1	62.4	14.2	283.4	74.9	17	415.6	109.8	24.9	472.3	124.8	28.3
58	2.28	1.175	0.31	25	3625	105.8	27.9	6.3	235	62.1	14.1	293.8	77.6	17.6	352.5	93.1	21.2	517.1	136.6	31	587.6	155.2	35.3
65	2.56	1.476	0.39	20	2900	132.8	35.1	8	295.2	78	17.7	369	97.5	22.1	442.8	117	26.6	649.4	171.6	39	737.9	194.9	44.3
73	2.87	1.862	0.492	16	2320	167.5	44.3	10.1	372.3	98.4	22.3	465.4	122.9	27.9	558.5	147.5	33.5	819.1	216.4	49.1	930.8	245.9	55.8
83	3.27	2.406	0.636	12.5	1813	216.6	57.2	13	481.3	127.1	28.9	601.6	158.9	36.1	721.9	190.7	43.3	1058.9	279.7	63.5	1203.2	317.9	72.2
93	3.661	3.021	0.798	10	1450	271.9	71.8	16.3	604.3	159.6	36.3	755.3	199.5	45.3	906.4	239.4	54.4						
Brake Horsepower Required						66.5			147.9			184.9			221.8			329.1(Continuous work)			369.1		

*Flows are based on 100% volumetric efficiency. Brake Horsepower /Kilowatts Required is based on 90% Mechanical Efficiency, Actual application horsepower requirements can be calculated using the equation: BHP = (GPM * PSI) / (1714 * 0.90); Consult YaLong for continuous service speeds in excess of 440 RPM.

Q410 Quintuplex Plunger / Piston Pump

The YALONG Model Q410 is a single acting quintuplex plunger / piston pump rated at 410 HP in continuous duty services and up to 458 HP in intermittent duty. This versatile pump is offered with a variety of material and design options that make it ideal for general industrial, typical applications involved in the production of Petrochemical oil and natural gas. and Horizontal Directional Drilling Technologies.



Specifications	English Units	Metric Units
Stroke Length		175 mm
Rated Rod Load	14550 lb	6600 Kg
Pump Weight	7275 lb	3300 Kg
Oil Capacity	42.3 gal	160 L
Max. Fluid Temp	752 °F	400 °C
Mechanical Efficiency		90%

Specifications	Continuous	Intermittent
Rated bhp	410 HP	458 HP
Maximum Speed	288 rpm	320 rpm
Minimum Speed	90 rpm	75 rpm

Max. plunger size x stroke length. 127x175mm
Crankshaft extension Dia.x length 115x262 mm
Keyway (width x depth x length) 32x11x250 mm

Performance Ratings

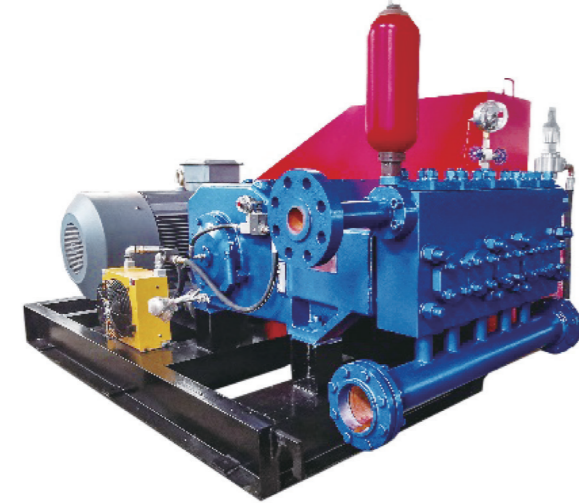
(Volumes indicated are displacement of incompressible fluid)

plunger Dia.		L/RPM		Max.Press.		pump speed=90RPM			pump speed=150RPM			pump speed=200RPM			pump speed=250RPM			pump speed=288RPM			pump speed=320RPM		
mm	in	L/RPM	Gal/RPM	Mpa	Psi	LPM	GPM	M³/h	LPM	GPM	M³/h	LPM	GPM	M³/h	LPM	GPM	M³/h	LPM	GPM	M³/h	LPM	GPM	M³/h
32	1.26	0.703	0.186	80	11600	63.3	16.7	3.8	105.5	27.9	6.3	140.7	37.2	8.4	175.8	46.5	10.6	202.6	53.5	12.2	225.1	59.5	13.5
36	1.42	0.89	0.235	63	9135	80.1	21.2	4.8	133.5	35.3	8	178	47	10.7	222.5	58.8	13.4	256.4	67.7	15.4	284.9	75.3	17.1
41	1.61	1.155	0.305	50	7250	103.9	27.5	6.2	173.2	45.8	10.4	230.9	61	13.9	288.7	76.3	17.3	332.5	87.8	20	369.5	97.6	22.2
45	1.77	1.391	0.367	40	5800	125.2	33.1	7.5	208.6	55.1	12.5	278.2	73.5	16.7	347.7	91.9	20.9	400.6	105.8	24	445.1	117.6	26.7
51	2.01	1.787	0.472	32	4640	160.8	42.5	9.6	268	70.8	16.1	357.3	94.4	21.4	446.6	118	26.8	514.5	135.9	30.9	571.7	151	34.3
58	2.28	2.311	0.61	25	3625	208	54.9	12.5	346.6	91.6	20.8	462.1	122.1	27.7	577.7	152.6	34.7	665.5	175.8	39.9	739.4	195.3	44.4
64	2.52	2.813	0.743	20	2900	253.2	66.9	15.2	422	111.5	25.3	562.7	148.6	33.8	703.4	185.8	42.2	810.3	214	48.6	900.3	237.8	54
72	2.83	3.561	0.941	16	2320	320.5	84.7	19.2	534.1	141.1	32	712.2	188.1	42.7	890.2	235.2	53.4	1025.5	270.9	61.5	1139.4	301	68.4
82	3.23	4.619	1.22	12.5	1813	415.7	109.8	24.9	692.8	183	41.6	923.7	244	55.4	1154.6	305	69.3	1330.1	351.4	79.8	1477.9	390.4	88.7
91	3.58	5.688	1.503	10	1450	511.9	135.2	30.7	853.2	225.4	51.2	1137.6	300.5	68.3	1422	375.7	85.3	1638.1	432.7	98.3	1820.2	480.8	109.2
102	4.02	7.146	1.888	8	1160	643.2	169.9	38.6	1071.9	283.2	64.3	1429.2	377.6	85.8	1786.6	472	107.2	2058.1	543.7	123.5	2286.8	604.1	137.2
115	4.53	9.084	2.4	6.3	914	817.6	216	49.1	1362.6	360	81.8	1816.8	479.9	109	2271	599.9	136.3	2616.2	691.1	157	2906.9	767.9	174.4
144	5.67	14.243	3.763	4	580	1281.9	338.6	76.9	2136.5	564.4	128.2	2848.6	752.5	170.9	3560.8	940.6	213.6						
Brake Horsepower Required (HP)						129			215			286.6			358.3			412.8 (Continuous work)			458.6		

*Flows are based on 100% volumetric efficiency. Brake Horsepower /Kilowatts Required is based on 90% Mechanical Efficiency, Actual application horsepower requirements can be calculated using the equation: BHP = (GPM * PSI) / (1714 * 0.90); Consult YaLong for continuous service speeds in excess of 288 RPM.

Q470 Quintuplex Plunger Pump

The YALONG Model Q470 is a single acting quintuplex plunger pump rated at 490 HP in continuous duty services and up to 592 HP in intermittent duty. This versatile pump is offered with a variety of material and design options that make it ideal for general industrial, typical applications involved in the production of Petrochemical oil and natural gas, and Horizontal Directional Drilling Technologies.



Specifications	English Units	Metric Units
Stroke Length	4.53 in	115 mm
Rated Rod Load	19172 lb	8800 Kg
Pump Weight	4188 lb	1900 Kg
Oil Capacity	25 gal	95 L
Max. Fluid Temp	752 °F	400 °C
Mechanical Efficiency		90%

Specifications	Continuous	Intermittent
Rated bhp	490 HP	592HP
Maximum Speed	390 rpm	470 rpm
Minimum Speed	75 rpm	50 rpm

Max. plunger size x stroke length. 104x115mm
Crankshaft extension Dia.x length 103x223 mm
Keyway (width x depth x length) 28x10x214 mm

Performance Ratings

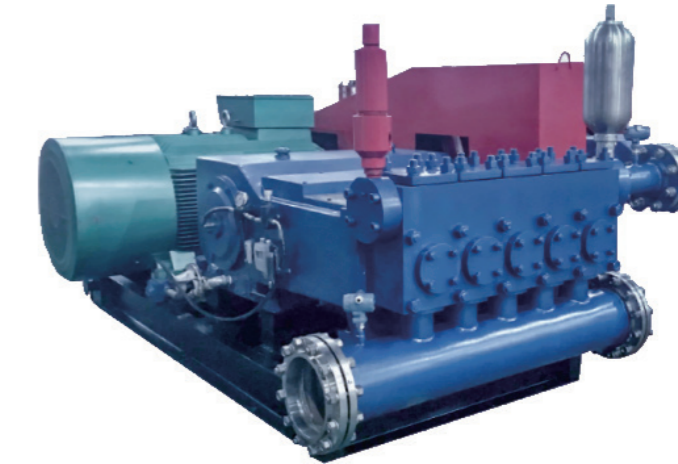
(Volumes indicated are displacement of incompressible fluid)

plunger Dia.		L/RPM		Max Press.		pump speed=90RPM			pump speed=150RPM			pump speed=250RPM			pump speed=300RPM			pump speed=390RPM			pump speed=470RPM		
mm	in	L/RPM	Gal/RPM	Mpa	Psi	LPM	GPM	M ³ /h	LPM	GPM	M ³ /h	LPM	GPM	M ³ /h	LPM	GPM	M ³ /h	LPM	GPM	M ³ /h	LPM	GPM	M ³ /h
23	0.91	0.239	0.0631	200	29000	21.5	5.7	1.3	35.8	9.5	2.1	59.7	15.8	3.6	71.6	18.9	4.3	93.1	24.6	5.6	112.2	29.6	6.7
27	1.06	0.329	0.0869	150	21750	29.6	7.8	1.8	49.4	13	3	82.3	21.7	4.9	98.7	26.1	5.9	128.3	33.9	7.7	154.7	40.9	9.3
33	1.3	0.492	0.1299	100	14500	44.2	11.7	2.7	73.7	19.5	4.4	122.9	32.5	7.4	147.5	39	8.8	191.7	50.6	11.5	231	61	13.9
37	1.46	0.618	0.1632	80	11600	55.6	14.7	3.3	92.7	24.5	5.6	154.5	40.8	9.3	185.4	49	11.1	241	63.7	14.5	290.4	76.7	17.4
42	1.65	0.796	0.2103	63	9135	71.7	18.9	4.3	119.4	31.6	7.2	199.1	52.6	11.9	238.9	63.1	14.3	310.5	82	18.6	374.2	98.9	22.5
47	1.85	0.997	0.2634	50	7250	89.7	23.7	5.4	149.6	39.5	9	249.3	65.9	15	299.1	79	17.9	388.9	102.7	23.3	468.6	123.8	28.1
53	2.09	1.268	0.3349	40	5800	114.1	30.1	6.8	190.2	50.2	11.4	317	83.7	19	380.4	100.5	22.8	494.5	130.6	29.7	595.9	157.4	35.8
59	2.32	1.571	0.4151	31.5	4568	141.4	37.4	8.5	235.7	62.3	14.1	392.8	103.8	23.6	471.4	124.5	28.3	612.8	161.9	36.8	738.5	195.1	44.3
67	2.64	2.026	0.5353	25	3625	182.4	48.2	10.9	303.9	80.3	18.2	506.6	133.8	30.4	607.9	160.6	36.5	790.2	208.8	47.4	952.3	251.6	57.1
74	2.91	2.472	0.653	20	2900	222.5	58.8	13.3	370.8	97.9	22.2	617.9	163.2	37.1	741.5	195.9	44.5	964	254.7	57.8	1161.7	306.9	69.7
83	3.27	3.11	0.8214	16	2320	279.9	73.9	16.8	466.4	123.2	28	777.4	205.4	46.6	932.9	246.4	56	1212.7	320.4	72.8	1461.5	386.1	87.7
94	3.7	3.988	1.0536	12.5	1813	359	94.8	21.5	598.3	158	35.9	997.1	263.4	59.8	1196.5	316.1	71.8	1555.5	410.9	93.3			
106	4.17	5.072	1.3398	10	1450	456.4	120.6	27.4	760.7	201	45.6	1267.9	334.9	76.1	1521.5	401.9	91.3						
Brake Horsepower Required						109.1			181.8			303			363.6			472.7 (Continuous work)			569.6		

*Flows are based on 100% volumetric efficiency. Brake Horsepower /Kilowatts Required is based on 90% Mechanical Efficiency, Actual application horsepower requirements can be calculated using the equation: BHP = (GPM * PSI) / (1714 * 0.90); Consult YaLong for continuous service speeds in excess of 390 RPM.

Q550 Quintuplex Plunger / Piston Pump

The YALONG Model Q550 is a single acting quintuplex plunger / piston pump rated at 618.9 HP in continuous duty services and up to 687.7 HP in intermittent duty. This versatile pump is offered with a variety of material and design options that make it ideal for general industrial, typical applications involved in the production of Petrochemical oil and natural gas. and Horizontal Directional Drilling Technologies.



Specifications	English Units	Metric Units
Stroke Length		175 mm
Rated Rod Load	21569 lb	9900 Kg
Pump Weight	7275 lb	3600 Kg
Oil Capacity	44 gal	165 L
Max. Fluid Temp	752 °F	400 °C
Mechanical Efficiency		90%

Specifications	Continuous	Intermittent
Rated bhp	618.9 HP	687.7 HP
Maximum Speed	288 rpm	320 rpm
Minimum Speed	90 rpm	75 rpm

Max. plunger size x stroke length. 127x175mm
Crankshaft extension Dia.x length 115x262 mm
Keyway (width x depth x length) 32x11x250 mm

Performance Ratings

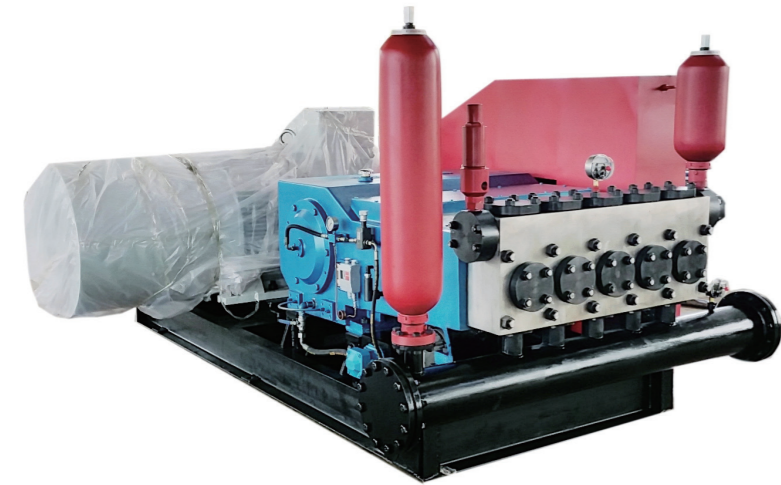
(Volumes indicated are displacement of incompressible fluid)

plunger Dia.		L/RPM		Max Press.		pump speed=90RPM			pump speed=150RPM			pump speed=200RPM			pump speed=250RPM			pump speed=288RPM			pump speed=320RPM		
mm	in	L/RPM	Gal/RPM	Mpa	Psi	LPM	GPM	M ³ /h	LPM	GPM	M ³ /h	LPM	GPM	M ³ /h	LPM	GPM	M ³ /h	LPM	GPM	M ³ /h	LPM	GPM	M ³ /h
39	1.54	1.045	0.276	80	11600	94	24.8	5.6	156.7	41.4	9.4	208.9	55.2	12.5	261.2	69	15.7	300.9	79.5	18.1	334.3	88.3	20.1
44	1.73	1.33	0.351	63	9135	119.7	31.6	7.2	199.5	52.7	12	266	70.3	16	332.4	87.8	19.9	383	101.2	23	425.5	112.4	25.5
50	1.97	1.717	0.454	50	7250	154.5	40.8	9.3	257.6	68	15.5	343.4	90.7	20.6	429.3	113.4	25.8	494.6	130.6	29.7	549.5	145.2	33
56	2.2	2.154	0.569	40	5800	193.9	51.2	11.6	323.1	85.4	19.4	430.8	113.8	25.8	538.5	142.3	32.3	620.4	163.9	37.2	689.3	182.1	41.4
63	2.48	2.726	0.72	32	4640	245.4	64.8	14.7	408.9	108	24.5	545.2	144	32.7	681.6	180	40.9	785.1	207.4	47.1	872.4	230.5	52.3
71	2.8	3.463	0.915	25	3625	311.6	82.3	18.7	519.4	137.2	31.2	692.5	182.9	41.6	865.6	228.7	51.9	997.2	263.4	59.8	1108	292.7	66.5
79	3.11	4.287	1.132	20	2900	385.8	101.9	23.1	643	169.9	38.6	857.4	226.5	51.4	1071.7	283.1	64.3	1234.6	326.1	74.1	1371.8	362.4	82.3
88	3.46	5.319	1.405	16	2320	478.7	126.5	28.7	797.9	210.8	47.9	1063.8	281	63.8	1329.8	351.3	79.8	1531.9	404.7	91.9	1702.1	449.7	102.1
100	3.94	6.869	1.815	12.5	1813	618.2	163.3	37.1	1030.3	272.2	61.8	1373.8	362.9	82.4	1717.2	453.6	103	1978.2	522.6	118.7	2198	580.6	131.9
112	4.41	8.616	2.276	10	1450	775.5	204.9	46.5	1292.4	341.4	77.5	1723.2	455.2	103.4	2154	569	129.2	2481.5	655.5	148.9	2757.2	728.4	165.4
125	4.92	10.732	2.835	8	1160	965.9	255.2	58	1609.9	425.3	96.6	2146.5	567	128.8	2683.1	708.8	161	3090.9	816.5	185.5	3434.4	907.3	206.1
141	5.55	13.656	3.607	6.3	914	1229	324.7	73.7	2048.4	541.1	122.9	2731.2	721.5	163.9	3413.9	901.9	204.8	3932.9	1038.9	236			
158	6.22	17.147	4.53	5	725	1543.2	407.7	92.6	2572.1	679.5	154.3	3429.4	906	205.8									
Brake Horsepower Required (HP)						193.4			322.3			429.8			537.2			618.9 (Continuous work)			687.7		

*Flows are based on 100% volumetric efficiency. Brake Horsepower /Kilowatts Required is based on 90% Mechanical Efficiency, Actual application horsepower requirements can be calculated using the equation: BHP = (GPM * PSI) / (1714 * 0.90); Consult YaLong for continuous service speeds in excess of 288 RPM.

Q600 Quintuplex Plunger / Piston Pump

The YALONG Model Q600 is a single acting quintuplex plunger / piston pump rated at 611.1 HP in continuous duty services and up to 634 HP in intermittent duty. This versatile pump is offered with a variety of material and design options that make it ideal for general industrial, typical applications involved in the production of Petrochemical oil and natural gas, and Horizontal Directional Drilling Technologies.



Specifications	English Units	Metric Units
Stroke Length		200 mm
Rated Rod Load	21569 lb	9900 Kg
Pump Weight	7275 lb	3600 Kg
Oil Capacity	44 gal	165 L
Max. Fluid Temp	752 °F	400 °C
Mechanical Efficiency		90%

Specifications	Continuous	Intermittent
Rated bhp	611 HP	634 HP
Maximum Speed	265 rpm	275 rpm
Minimum Speed	75 rpm	50 rpm
Max. plunger size x stroke length.	127x175mm	
Crankshaft extension Dia.x length	115x262 mm	
Keyway (width x depth x length)	32x11x250 mm	

Performance Ratings

(Volumes indicated are displacement of incompressible fluid)

plunger Dia.		L/RPM		Max.Press.		pump speed=75RPM			pump speed=150RPM			pump speed=210RPM			pump speed=235RPM			pump speed=265RPM			pump speed=275RPM		
mm	in	L/RPM	Gal/RPM	Mpa	Psi	LPM	GPM	M ³ /h	LPM	GPM	M ³ /h	LPM	GPM	M ³ /h	LPM	GPM	M ³ /h	LPM	GPM	M ³ /h	LPM	GPM	M ³ /h
38	1.5	1.134	0.299	80	11600	85	22.5	5.1	170	44.9	10.2	238	62.9	14.3	266.4	70.4	16	300.4	79.4	18	311.7	82.3	18.7
43	1.69	1.451	0.383	63	9135	109	28.8	6.5	217.7	57.5	13.1	304.8	80.5	18.3	341.1	90.1	20.5	384.6	101.6	23.1	399.2	105.4	23.9
48	1.89	1.809	0.478	50	7250	136	35.8	8.1	271.3	71.7	16.3	379.8	100.3	22.8	425	112.3	25.5	479.3	126.6	28.8	497.4	131.4	29.8
54	2.13	2.289	0.605	40	5800	172	45.4	10.3	343.4	90.7	20.6	480.7	127	28.8	537.9	142.1	32.3	606.6	160.2	36.4	629.5	166.3	37.8
61	2.4	2.921	0.772	32	4640	219	57.9	13.1	438.1	115.7	26.3	613.4	162	36.8	686.4	181.3	41.2	774.1	204.5	46.4	803.3	212.2	48.2
68	2.68	3.63	0.959	25	3625	272	71.9	16.3	544.5	143.8	32.7	762.3	201.4	45.7	853	225.3	51.2	961.9	254.1	57.7	998.2	263.7	59.9
77	3.03	4.654	1.23	20	2900	349	92.2	20.9	698.1	184.4	41.9	977.4	258.2	58.6	1093.8	288.9	65.6	1233.4	325.8	74	1279.9	338.1	76.8
86	3.39	5.806	1.534	16	2320	435	115	26.1	870.9	230.1	52.3	1219.2	322.1	73.2	1364.4	360.4	81.9	1538.6	406.4	92.3	1596.6	421.8	95.8
97	3.82	7.386	1.951	12.5	1813	554	146.3	33.2	1107.9	292.7	66.5	1551.1	409.7	93.1	1735.7	458.5	104.1	1957.3	517.1	117.4	2031.2	536.6	121.9
109	4.29	9.327	2.464	10	1450	699	184.8	42	1399	369.6	83.9	1958.6	517.4	117.5	2191.7	579	131.5	2471.5	652.9	148.3	2564.8	677.5	153.9
121	4.76	11.493	3.036	8	1160	862	227.7	51.7	1724	455.4	103.4	2413.6	637.6	144.8	2700.9	713.5	162.1	3045.7	804.6	182.7	3160.6	834.9	189.6
137	5.39	14.734	3.892	6.3	914	1105	291.9	66.3	2210	583.8	132.6	3094.1	817.4	185.6	3462.4	914.7	207.7	3904.4	1031.4	234.3	4051.8	1070.4	243.1
Brake Horsepower Required (HP)						173			345.9			484.3			541.9			611.1 (Continuous work)			634.17		

*Flows are based on 100% volumetric efficiency. Brake Horsepower /Kilowatts Required is based on 90% Mechanical Efficiency, Actual application horsepower requirements can be calculated using the equation: BHP = (GPM * PSI) / (1714 * 0.90); Consult YaLong for continuous service speeds in excess of 265 RPM.

Q675 Quintuplex Plunger / Piston Pump

The YALONG Model Q675 is a single acting quintuplex plunger / piston pump rated at 675HP in continuous duty services and up to 810 HP in intermittent duty. This versatile pump is offered with a variety of material and design options that make it ideal for general industrial, typical applications involved in the production of Petrochemical oil and natural gas, and Horizontal Directional Drilling Technologies.



Specifications	English Units	Metric Units
Stroke Length		127 mm
Rated Rod Load	25573 lb	11600Kg
Pump Weight	6945 lb	3150 Kg
Oil Capacity	42.3 gal	132 L
Max. Fluid Temp	752 °F	400 °C
Mechanical Efficiency		90%

Specifications	Continuous	Intermittent
Rated bhp	675HP	810 HP
Maximum Speed	370rpm	445 rpm
Minimum Speed	75 rpm	50 rpm
Max. plunger size x stroke length.	140x127mm	
Crankshaft extension Dia.x length	115x262 mm	
Keyway (width x depth x length)	32x11x250 mm	

Performance Ratings

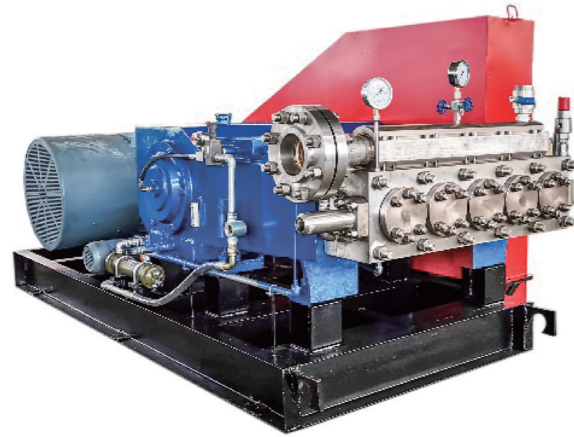
(Volumes indicated are displacement of incompressible fluid)

plunger Dia.		L/RPM		Max.Press.		pump speed=90RPM			pump speed=150RPM			pump speed=250RPM			pump speed=300RPM			pump speed=370RPM			pump speed=445RPM		
mm	in	L/RPM	Gal/RPM	Mpa	Psi	LPM	GPM	M ³ /h	LPM	GPM	M ³ /h	LPM	GPM	M ³ /h	LPM	GPM	M ³ /h	LPM	GPM	M ³ /h	LPM	GPM	M ³ /h
38	1.5	0.72	0.1901	100	14500	64.8	17.1	3.9	108	28.5	6.5	179.9	47.5	10.8	215.9	57	13	266.3	70.4	16	320.3	84.6	19.2
43	1.69	0.922	0.2435	80	11600	83	21.9	5	138.3	36.5	8.3	230.4	60.9	13.8	276.5	73	16.6	341	90.1	20.5	410.1	108.3	24.6
48	1.89	1.148	0.3034	63	9135	103.4	27.3	6.2	172.3	45.5	10.3	287.1	75.8	17.2	344.5	91	20.7	424.9	112.3	25.5	511.1	135	30.7
54	2.13	1.454	0.384	50	7250	130.8	34.6	7.8	218	57.6	13.1	363.4	96	21.8	436.1	115.2	26.2	537.8	142.1	32.3	646.8	170.9	38.8
61	2.4	1.795	0.4741	40	5800	161.5	42.7	9.7	269.2	71.1	16.2	448.6	118.5	26.9	538.4	142.2	32.3	664	175.4	39.8	798.6	211	47.9
68	2.68	2.305	0.6089	31.5	4568	207.4	54.8	12.4	345.7	91.3	20.7	576.2	152.2	34.6	691.5	182.7	41.5	852.8	225.3	51.2	1025.7	271	61.5
76.2	3	2.894	0.7646	25	3625	260.5	68.8	15.6	434.2	114.7	26	723.6	191.2	43.4	868.3	229.4	52.1	1070.9	282.9	64.3	1288	340.2	77.3
86	3.39	3.687	0.9739	20	2900	331.8	87.7	19.9	553	146.1	33.2	921.7	243.5	55.3	1106	292.2	66.4	1364.1	360.4	81.8	1640.6	433.4	98.4
96	3.78	4.594	1.2136	16	2320	413.5	109.2	24.8	689.1	182	41.3	1148.5	303.4	68.9	1378.2	364.1	82.7	1699.8	449	102	2044.3	540	122.7
108	4.25	5.814	1.5359	12.5	1813	523.3	138.2	31.4	872.1	230.4	52.3	1453.6	384	87.2	1744.3	460.8	104.7	2151.3	568.3	129.1	2587.3	683.5	155.2
121	4.76	7.298	1.928	10	1450	656.8	173.5	39.4	1094.7	289.2	65.7	1824.5	482	109.5	2189.5	578.4	131.4	2700.3	713.3	162			
135	5.31	9.085	2.3999	8	1160	817.6	216	49.1	1362.7	360	81.8	2271.2	600	136.3	2725.4	720	163.5						
Brake Horsepower Required						164.2			273.7			456.2			547.4			675.1 (Continuous work)			812		

*Flows are based on 100% volumetric efficiency. Brake Horsepower /Kilowatts Required is based on 90% Mechanical Efficiency, Actual application horsepower requirements can be calculated using the equation: BHP = (GPM * PSI) / (1714 * 0.90); Consult YaLong for continuous service speeds in excess of 370 RPM.

Q810 Quintuplex Plunger / Piston Pump

The YALONG Model Q810 is a single acting quintuplex plunger / piston pump rated at 810 HP in continuous duty services and up to 900 HP in intermittent duty. This versatile pump is offered with a variety of material and design options that make it ideal for general industrial, typical applications involved in the production of Petrochemical oil and natural gas, and Horizontal Directional Drilling Technologies.



Specifications	English Units	Metric Units
Stroke Length		175 mm
Rated Rod Load	28660 lb	13000 Kg
Pump Weight	8157 lb	3900 Kg
Oil Capacity	44 gal	165 L
Max. Fluid Temp	752 °F	400 °C
Mechanical Efficiency		90%

Specifications	Continuous	Intermittent
Rated bhp	810 HP	900HP
Maximum Speed	288 rpm	320rpm
Minimum Speed	75 rpm	50 rpm
Max. plunger size x stroke length.		140x175mm
Crankshaft extension Dia.x length		140x280 mm
Keyway (width x depth x length)		36x12x270 mm

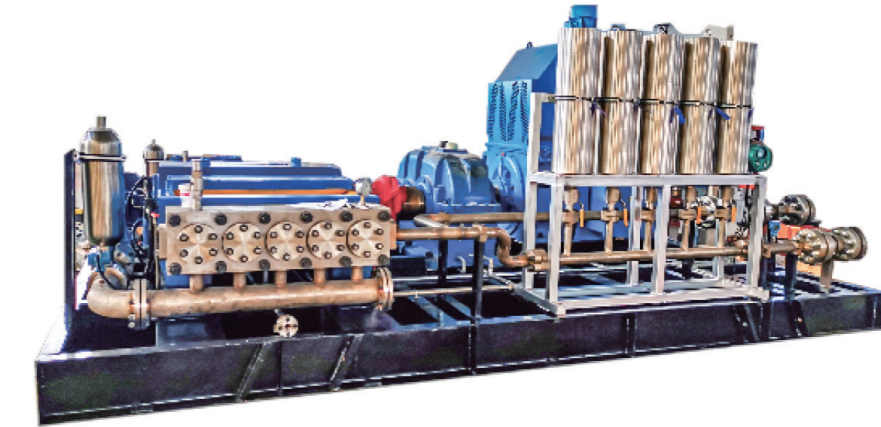
P
(Volumes indicated are displacement of incompressible fluid)

plunger Dia.	mm	in	L/RPM	Gal/RPM	Max Press.		pump speed=90RPM			pump speed=150RPM			pump speed=200RPM			pump speed=267RPM			pump speed=288RPM		
					Mpa	Psi	LPM	GPM	M ³ /h	LPM	GPM	M ³ /h	LPM	GPM	M ³ /h	LPM	GPM	M ³ /h	LPM	GPM	M ³ /h
45	1.77	1.391	0.367	80	11600	125	33.1	7.5	208.6	55.1	12.5	278.2	73.5	16.7	371.4	98.1	22.3	400.6	105.8	24	
51	2.01	1.787	0.472	63	9135	161	42.5	9.6	268	70.8	16.1	357.3	94.4	21.4	477	126	28.6	514.5	135.9	30.9	
57	2.24	2.232	0.59	50	7250	201	53.1	12.1	334.7	88.4	20.1	446.3	117.9	26.8	595.9	157.4	35.8	642.7	169.8	38.6	
64	2.52	2.813	0.743	40	5800	253	66.9	15.2	422	111.5	25.3	562.7	148.6	33.8	751.2	198.4	45.1	810.3	214	48.6	
72	2.83	3.561	0.941	32	4640	320	84.7	19.2	534.1	141.1	32	712.2	188.1	42.7	950.7	251.2	57	1025.5	270.9	61.5	
81	3.19	4.507	1.191	25	3625	406	107.1	24.3	676	178.6	40.6	901.3	238.1	54.1	1203.3	317.9	72.2	1297.9	342.9	77.9	
90	3.54	5.564	1.47	20	2900	501	132.3	30	834.6	220.5	50.1	1112.7	294	66.8	1485.5	392.4	89.1	1602.3	423.3	96.1	
101.4	3.99	7.062	1.866	16	2320	636	167.9	38.1	1059.4	279.9	63.6	1412.5	373.1	84.7	1885.7	498.1	113.1	2034	537.3	122	
115	4.53	9.084	2.4	12.5	1813	818	216	49.1	1362.6	360	81.8	1816.8	479.9	109	2425.4	640.7	145.5	2616.2	691.1	157	
128	5.04	11.254	2.973	10	1450	1013	267.6	60.8	1688.1	445.9	101.3	2250.8	594.6	135	3004.8	793.8	180.3	3241.1	856.2	194.5	
143	5.63	14.046	3.711	8	1160	1264	333.9	75.8	2106.9	556.6	126.4	2809.2	742.1	168.6	3750.3	990.7	225	4045.2	1068.6	242.7	
162	6.38	18.026	4.762	6.3	914	1622	428.6	97.3	2704	714.3	162.2	3605.3	952.4	216.3	4813	1271.5	288.8				
Brake Horsepower Required							253.7			422.8			563.8			752.6			811.8 (Continuous work)		

*Flows are based on 100% volumetric efficiency. Brake Horsepower /Kilowatts Required is based on 90% Mechanical Efficiency, Actual application horsepower requirements can be calculated using the equation: BHP = (GPM * PSI) / (1714 * 0.90); Consult YaLong for continuous service speeds in excess of 288 RPM.

Q1000 Quintuplex Plunger / Piston Pump

The YALONG Model Q1000 is a single acting quintuplex plunger / piston pump rated at 1010HP in continuous duty services. This versatile pump is offered with a variety of material and design options that make it ideal for general industrial, and typical applications involved in the production of Petrochemical oil and natural gas, and Horizontal Directional Drilling Technologies.



Specifications	English Units	Metric Units
Stroke Length	7"	177 mm
Rated Rod Load	36376 lb	16500 Kg
Pump Weight	10600 lb	5200 Kg
Oil Capacity	47 gal	175 L
Max. Fluid Temp	752 °F	400 °C
Mechanical Efficiency		90%

Specifications	Continuous	Intermittent
Rated bhp	1043 HP	1158HP
Maximum Speed	288 rpm	320rpm
Minimum Speed	75 rpm	50 rpm
Max. plunger size x stroke length.		140x175mm
Crankshaft extension Dia.x length		140x280 mm
Keyway (width x depth x length)		36x12x270 mm

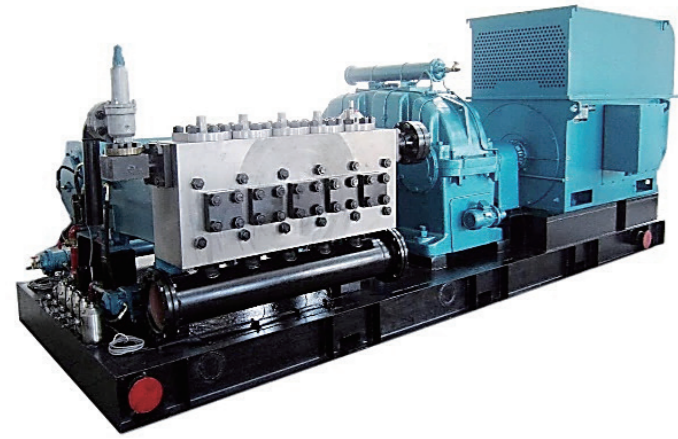
Performance Ratings
(Volumes indicated are displacement of incompressible fluid)

plunger Dia.	mm	in	L/RPM	Gal/RPM	Max Press.		pump speed=90RPM			pump speed=150RPM			pump speed=200RPM			pump speed=266RPM			pump speed=288RPM		
					Mpa	Psi	LPM	GPM	M ³ /h	LPM	GPM	M ³ /h	LPM	GPM	M ³ /h	LPM	GPM	M ³ /h	LPM	GPM	M ³ /h
51	2.01	1.807	0.477	80	11600	163	43	9.8	271	71.6	16.3	361.4	95.5	21.7	480.7	127	28.8	520.4	137.5	31.2	
57	2.24	2.257	0.596	63	9135	203	53.7	12.2	338.6	89.4	20.3	451.4	119.3	27.1	600.4	158.6	36	650.1	171.7	39	
64	2.52	2.846	0.752	50	7250	256	67.7	15.4	426.8	112.8	25.6	569.1	150.3	34.1	756.9	200	45.4	819.5	216.5	49.2	
72	2.83	3.601	0.951	40	5800	324	85.6	19.4	540.2	142.7	32.4	720.3	190.3	43.2	958	253.1	57.5	1037.2	274	62.2	
81	3.19	4.558	1.204	32	4640	410	108.4	24.6	683.7	180.6	41	911.6	240.8	54.7	1212.5	320.3	72.7	1312.7	346.8	78.8	
91	3.58	5.753	1.52	25	3625	518	136.8	31.1	863	228	51.8	1150.6	304	69	1530.3	404.3	91.8	1656.9	437.7	99.4	
102	4.02	7.228	1.909	20	2900	651	171.8	39	1084.2	286.4	65.1	1445.6	381.9	86.7	1922.6	507.9	115.4	2081.6	549.9	124.9	
114	4.49	9.029	2.385	16	2320	813	214.7	48.8	1354.3	357.8	81.3	1805.7	477	108.3	2401.6	634.4	144.1	2600.3	686.9	156	
129	5.08	11.561	3.054	12.5	1813	1040	274.9	62.4	1734.1	458.1	104	2312.2	610.8	138.7	3075.2	812.4	184.5	3329.5	879.6	199.8	
144	5.67	14.406	3.806	10	1450	1297	342.5	77.8	2160.9	570.8	129.7	2881.2	761.1	172.9	3831.9	1012.3	229.9	4148.9	1096	248.9	
162	6.38	18.232	4.816	8	1160	1641	433.5	98.5	2734.9	722.5	164.1	3646.5	963.3	218.8	4849.8	1281.2	291				
182	7.17	23.012	6.079	6.3	914	2071	547.1	124.3	3451.8	911.9	207.1	4602.4	1215.8	276.1							
Brake Horsepower Required							325.9			543.1			724.2			963.2			1042.8 (Continuous work)		

*Flows are based on 100% volumetric efficiency. Brake Horsepower /Kilowatts Required is based on 90% Mechanical Efficiency, Actual application horsepower requirements can be calculated using the equation: BHP = (GPM * PSI) / (1714 * 0.90); Consult YaLong for continuous service speeds in excess of 288 RPM.

Q1650 Quintuplex Plunger / Piston Pump

The YALONG Model Q1650 is a single acting quintuplex plunger/ piston pump rated at 1650HP in continuous duty services .This versatile pump is offered with a variety of material and design options that make it ideal for general industrial, typical applications involved in the production of Petrochemical oil and natural gas, and Horizontal Directional Drilling Technologies.



Specifications	English Units	Metric Units
Stroke Length	7"	178 mm
Rated Rod Load	59525 lb	27000 Kg
Pump Weight	14330 lb	6500 Kg
Oil Capacity	84.5 gal	320 L
Max. Fluid Temp	752 °F	400 °C
Mechanical Efficiency		90%

Specifications	Continuous	Intermittent
Rated bhp	1637 HP	1900HP
Maximum Speed	275rpm	320rpm
Minimum Speed	75rpm	50rpm

Max. plunger size x stroke length. 185x178mm
Crankshaft extension Dia.x length 180x280 mm
Keyway (width x depth x length) 36x12x270 mm

Performance Ratings

(Volumes indicated are displacement of incompressible fluid)

plunger Dia.		L/RPM		Max.Press.		pump speed=75RPM			pump speed=148RPM			pump speed=209RPM			pump speed=235RPM			pump speed=265RPM			pump speed=275RPM		
mm	in	L/RPM	Gal/RPM	Mpa	Psi	LPM	GPM	M ³ /h	LPM	GPM	M ³ /h	LPM	GPM	M ³ /h	LPM	GPM	M ³ /h	LPM	GPM	M ³ /h	LPM	GPM	M ³ /h
58	2.28	2.35	0.621	100	14500	176	46.6	10.6	347.8	91.9	20.9	491.2	129.8	29.5	552.3	145.9	33.1	622.8	164.5	37.4	646.3	170.7	38.8
65	2.56	2.952	0.78	80	11600	221	58.5	13.3	436.9	115.4	26.2	616.9	163	37	693.7	183.2	41.6	782.2	206.6	46.9	811.7	214.4	48.7
73	2.87	3.723	0.984	63	9135	279	73.8	16.8	551	145.6	33.1	778.1	205.6	46.7	874.9	231.1	52.5	986.6	260.6	59.2	1023.9	270.5	61.4
83	3.27	4.813	1.271	50	7250	361	95.4	21.7	712.3	188.2	42.7	1005.9	265.7	60.4	1131.1	298.8	67.9	1275.4	336.9	76.5	1323.6	349.6	79.4
92	3.62	5.913	1.562	40	5800	444	117.2	26.6	875.2	231.2	52.5	1235.9	326.5	74.2	1389.6	367.1	83.4	1567	414	94	1626.2	429.6	97.6
104	4.09	7.557	1.996	31.5	4568	567	149.7	34	1118.4	295.4	67.1	1579.3	417.2	94.8	1775.8	469.1	106.5	2002.5	529	120.1	2078.1	549	124.7
117	4.61	9.564	2.526	25	3625	717	189.5	43	1415.4	373.9	84.9	1998.8	528	119.9	2247.5	593.7	134.8	2534.4	669.5	152.1	2630.1	694.8	157.8
131	5.16	11.99	3.167	20	2900	899	237.5	54	1774.5	468.8	106.5	2505.8	662	150.3	2817.5	744.3	169.1	3177.2	839.3	190.6	3297.1	871	197.8
146	5.75	14.892	3.934	16	2320	1117	295.1	67	2204.1	582.3	132.2	3112.5	822.2	186.8	3499.7	924.5	210	3946.5	1042.5	236.8	4095.4	1081.9	245.7
165	6.5	19.021	5.025	12.5	1813	1427	376.9	85.6	2815.1	743.7	168.9	3975.3	1050.2	238.5	4469.9	1180.8	268.2						
185	7.28	23.911	6.317	10	1450	1793	473.7	107.6	3538.9	934.9	212.3												
207	8.15	29.936	7.908	8	1160	2245	593.1	134.7	4430.6	1170.4	265.8												
Brake Horsepower Required						446.5			881			1244.1			1398.9			1577.5			1637.0 (Continuous work)		

*Flows are based on 100% volumetric efficiency. Brake Horsepower /Kilowatts Required is based on 90% Mechanical Efficiency, Actual application horsepower requirements can be calculated using the equation: BHP = (GPM * PSI) / (1714 * 0.90); Consult YaLong for continuous service speeds in excess of 275RPM.

S2400 Septuple pump / Piston Pump

The YALONG Model S2400 is a single acting Septuple plunger/ piston pump rated at 2400HP in continuous duty services .This versatile pump is offered with a variety of material and design options that make it ideal for general industrial, typical applications involved in the production of Petrochemical oil and natural gas, and Horizontal Directional Drilling Technologies.



Specifications	English Units	Metric Units
Stroke Length	7"	178 mm
Rated Rod Load	59525 lb	27000 Kg
Pump Weight	21605 lb	9800 Kg
Oil Capacity	84.5 gal	450 L
Max. Fluid Temp	752 °F	400 °C
Mechanical Efficiency		90%

Specifications	Continuous	Intermittent
Rated bhp	2400HP	
Maximum Speed	288rpm	
Minimum Speed	75rpm	50rpm

Max. plunger size x stroke length. 185x178mm
Crankshaft extension Dia.x length
Keyway (width x depth x length)

Performance Ratings

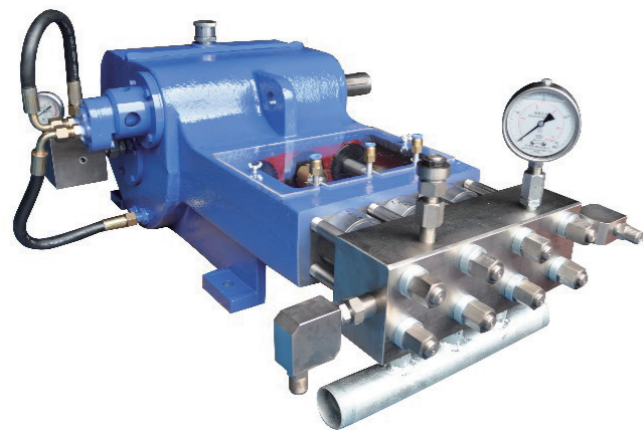
(Volumes indicated are displacement of incompressible fluid)

plunger Dia.		L/RPM		Max.Press.		pump speed=75RPM			pump speed=148RPM			pump speed=209RPM			pump speed=235RPM			pump speed=265RPM			pump speed=288RPM		
mm	in	L/RPM	Gal/RPM	Mpa	Psi	LPM	GPM	M ³ /h	LPM	GPM	M ³ /h	LPM	GPM	M ³ /h	LPM	GPM	M ³ /h	LPM	GPM	M ³ /h	LPM	GPM	M ³ /h
58	2.28	3.29	0.869	100	14500	247	65.2	14.8	487	128.6	29.2	687.7	181.7	41.3	773.2	204.3	46.4	871.9	230.3	52.3	947.6	250.3	56.9
65	2.56	4.133	1.092	80	11600	310	81.9	18.6	611.6	161.6	36.7	863.7	228.2	51.8	971.1	256.5	58.3	1095.1	289.3	65.7	1190.2	314.4	71.4
73	2.87	5.212	1.377	63	9135	391	103.3	23.5	771.4	203.8	46.3	1089.4	287.8	65.4	1224.9	323.6	73.5	1381.3	364.9	82.9	1501.2	396.6	90.1
83	3.27	6.738	1.78	50	7250	505	133.5	30.3	997.3	263.4	59.8	1408.3	372	84.5	1583.5	418.3	95	1785.6	471.7	107.1	1940.6	512.6	116.4
92	3.62	8.279	2.187	40	5800	621	164	37.3	1225.3	323.7	73.5	1730.3	457.1	103.8	1945.5	513.9	116.7	2193.9	579.6	131.6	2384.3	629.9	143.1
104	4.09	10.579	2.795	31.5	4568	793	209.6	47.6	1565.7	413.6	93.9	2211.1	584.1	132.7	2486.1	656.8	149.2	2803.5	740.6	168.2	3046.8	804.9	182.8
117	4.61	13.389	3.537	25	3625	1004	265.3	60.3	1981.6	523.5	118.9	2798.4	739.2	167.9	3146.5	831.2	188.8	3548.2	937.3	212.9	3856.1	1018.7	231.4
131	5.16	16.785	4.434	20	2900	1259	332.6	75.5	2484.2	656.3	149.1	3508.1	926.7	210.5	3944.6	1042	236.7	4448.1	1175.1	266.9	4834.2	1277	290.1
146	5.75	20.849	5.508	16	2320	1564	413.1	93.8	3085.7	815.2	185.1	4357.5	1151.1	261.5	4899.6	1294.3	294	5525.1	1459.6	331.5	6004.6	1586.2	360.3
165	6.5	26.629	7.035	12.5	1813	1997	527.6	119.8	3941.1	1041.1	236.5	5565.5	1470.2	333.9	6257.8	1653.1	375.5						
Brake Horsepower Required						625			1233.4			1741.8			1958.5			2208.5			2400.2 (Continuous work)		

*Flows are based on 100% volumetric efficiency. Brake Horsepower /Kilowatts Required is based on 90% Mechanical Efficiency, Actual application horsepower requirements can be calculated using the equation: BHP = (GPM * PSI) / (1714 * 0.90); Consult YaLong for continuous service speeds in excess of 275RPM.

T120 Intermittent Duty Services Triplex Plunger Pump

The YALONG Model Q810 is a single acting quintuplex plunger / piston pump rated at 810 HP in continuous duty services and up to 900 HP in intermittent duty. This versatile pump is offered with a variety of material and design options that make it ideal for general industrial, typical applications involved in the production of Petrochemical oil and natural gas, and Horizontal Directional Drilling Technologies.



Specifications	English Units	Metric Units
Stroke Length		95 mm
Rated Rod Load	9260 lb	4200 Kg
Pump Weight	926 lb	420 Kg
Gear Reduction Ratio	3.652:1 / 2.963:1	
Max. Fluid Temp	°F	90 °C
Mechanical Efficiency		85%

Specifications	Continuous	Intermittent
Rated bhp		120 HP
Maximum Speed		405 /500rpm
Minimum Speed		90 rpm
Max. plunger size x stroke length.	55x95mm	
Pinion shaft extension:	50x120 mm	
Keyway (width x depth x length)	36x12x270 mm	

Performance Ratings

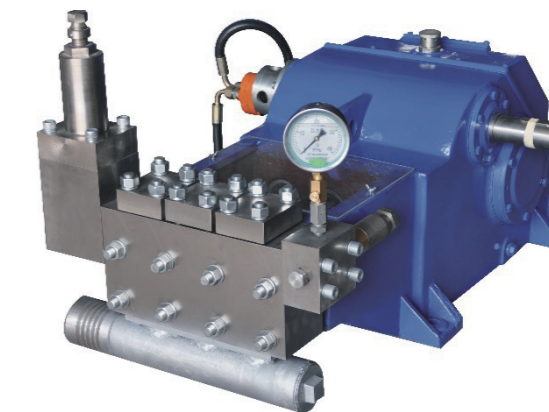
(Volumes indicated are displacement of incompressible fluid)

Reduction ratio i=3.652 Input speed=1480rpm Pump Rated speed= 405rpm		In the corresponding rated power output of the maximum pressure (MPa)						Reduction ratio i=2.963 Input speed=1480rpm Pump Rated speed= 500rpm		In the corresponding rated power output of the maximum pressure (MPa)					
Plunger Dia.(mm)	rated flow (m ³ /h)	30kw	37kw	45kw	55kw	75kw	90kw	Plunger Dia. (mm)	rated flow (L/min)	30kw	37kw	45kw	55kw	75kw	90kw
20	1.8		60	75	95	130	150								
22	2.4	37	46	56	68	85	105	24	60	25	30	38	46	61	75
24	2.88	31	38	47	57	75	90	26	70	21	26	32	40	53	70
25	3	30	36	45	55	70	82	28	80	18	22	28	35	48	56
26	3.42	26	32	40	50	65	76	30	95	16	19	25	30	40	50
28	3.9	23	28	35	45	59	69	32	105	14	17	22	26	36	45
30	4.5	20	25	30	38	50	60	35	125	12	15	18	22	30	36
32	5.1	17	22	26	34	45	50	45	215	7	9	11	13	18	22
35	6.12	15	18	22	28	36	43	50	265	5.5	7	8.5	10.5	14.5	17.5
40	8.1	11	14	17	21	28	33	55	321	4.6	6	7	9	12	14.5
45	10.2	9	11	14	17	24	28								
50	12.9	6.8	8.6	10.5	13	18	21								
55	15.5	5.5	7.4	8.6	11	15	18								

*Flows are based on 100% volumetric efficiency. Brake Horsepower /Kilowatts Required is based on 90% Mechanical Efficiency, Actual application horsepower requirements can be calculated using the equation: BHP = (GPM * PSI) / (1714 * 0.90); Consult YaLong for continuous service speeds in excess of 500 RPM.

T145 Intermittent Duty Services Triplex Plunger Pump

The YALONG Model T145 is a single acting triplex plunger pump rated at 145 HP in intermittent duty services . This versatile pump is offered with a variety of material and design options that make it ideal for general industrial, high pressure cleaning, and typical applications involved in the production of oil and natural gas.



Specifications	English Units	Metric Units
Stroke Length		100 mm
Rated Rod Load	12566 lb	5700 Kg
Pump Weight	1213 lb	550 Kg
Gear Reduction Ratio	4.45:1/ 3.54:1	
Max. Fluid Temp	°F	90 °C
Mechanical Efficiency		85%

Specifications	Continuous	Intermittent
Rated bhp		160 HP
Maximum Speed		332 /418rpm
Minimum Speed		90 rpm
Max. plunger size x stroke length.	30x100mm	
Pinion shaft extension:	54x138 mm	
Keyway (width x depth x length)	12x4.5x87 mm	

Performance Ratings

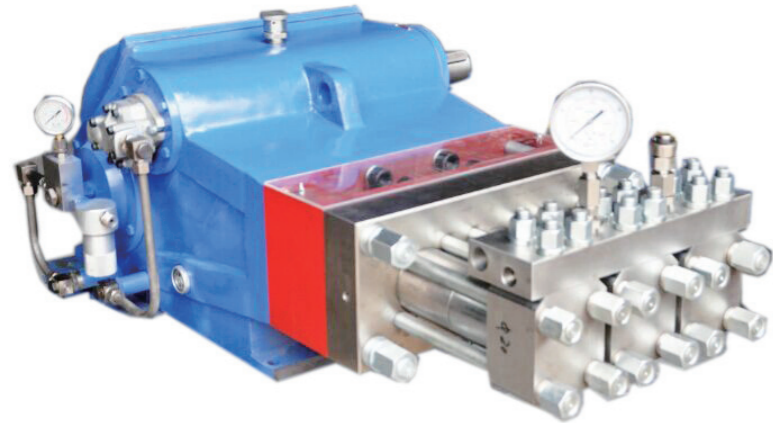
(Volumes indicated are displacement of incompressible fluid)

Reduction ratio i=4.45:1 Input speed=1480rpm Pump Rated speed= 332rpm		In the corresponding rated power output of the maximum pressure (MPa)			Reduction ratio i=3.54 Input speed=1480rpm Pump Rated speed= 418rpm		In the corresponding rated power output of the maximum pressure (MPa)		
Plunger Dia.(mm)	rated flow (m ³ /h)	75kw	90kw	110kw	Plunger Dia. (mm)	rated flow (m ³ /h)	75Kw	90kw	110kw
16	1.2	206	250	280	50	14.76	16	19	24
18	1.5	160	195	207	55	17.82	13	16	19
20	1.8	130	156	180	60	21.24	11	14	16
22	2.2	110	130	150	65	24.9	9.5	11	14
24	2.7	90	110	125					
26	3.1	78	93	107					
28	3.6	67	80	92					
30	4.2	58	70	80					
32	4.8	50	60	70					
35	5.7	42	50	59					
40	7.5	32	38	45					
45	9.48	25	30	35					

*Flows are based on 100% volumetric efficiency. Brake Horsepower /Kilowatts Required is based on 90% Mechanical Efficiency, Actual application horsepower requirements can be calculated using the equation: BHP = (GPM * PSI) / (1714 * 0.90); Consult YaLong for continuous service speeds in excess of 418 RPM.

T265 Intermittent Duty Services Triplex Plunger Pump

The YALONG Model T265 is a single acting triplex plunger pump rated at 265 HP in intermittent duty services . This versatile pump is offered with a variety of material and design options that make it ideal for general industrial, high pressure cleaning, and typical applications involved in the production of oil and natural gas.



Specifications	English Units	Metric Units
Stroke Length		120 mm
Rated Rod Load	16090 lb	7300 Kg
Pump Weight	1984 lb	900 Kg
Gear Reduction Ratio		4.043:1
Max. Fluid Temp	°F	90 °C
Mechanical Efficiency		85%

Specifications	Continuous	Intermittent
Rated bhp		268 HP
Maximum Speed		371 rpm
Minimum Speed		90 rpm
Max. plunger size x stroke length.		70x120mm
Pinion shaft extension:		65x100 mm
Keyway (width x depth x length)		16x6x90 mm

Performance Ratings

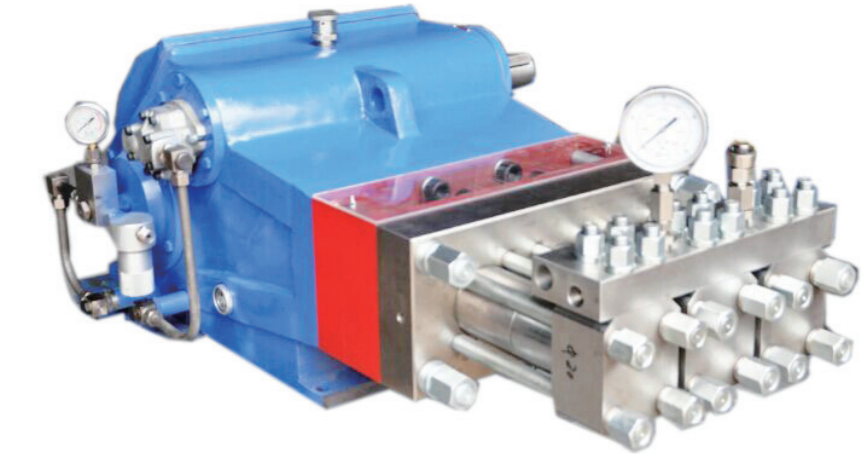
(Volumes indicated are displacement of incompressible fluid)

In the corresponding rated power output of the maximum pressure under the MPA				Input 1775rpm Rated speed 439 r/min rated flow		Input 1480rpm Rated speed 366 r/min rated flow		In the corresponding rated power output of the maximum pressure under the MPA				
110kw	132kw	160kw	200kw	L/min	m ³ /h	Plunger Dia. mm	L/min	m ³ /h	110kw	132kw	160kw	200kw
147	175	210	265	40	2.4	18	33	1.98	180	210	250	280
120	138	173	215	49	2.94	20	41	2.48	140	160	207	225
99	120	143	179	60	3.6	22	50	3	120	143	170	186
83	97	120	150	71	4.26	24	60	3.57	100	120	144	155
70	83	100	125	83	4.98	26	70	4.2	85	100	123	132
60	71	87	104	97	5.82	28	81	4.87	73	86	100	103
52	62	76	94	111	6.66	30	93	5.59	63	76	93	100
						32	106	6.35	56	66	82	88
						45	209	12.57	28	33	40	45
						50	259	15.51	22	27	33	36
						55	313	18.77	19	22	27	30
						60	372	22.34	16	19	23	25
						65	437	26.22	13	16	19	21
						70	507	30.41	10	13	17	19

*Flows are based on 100% volumetric efficiency. Brake Horsepower /Kilowatts Required is based on 90% Mechanical Efficiency, Actual application horsepower requirements can be calculated using the equation: BHP = (GPM * PSI) / (1714 * 0.90); Consult YaLong for continuous service speeds in excess of 439 RPM.

T355 Intermittent Duty Services Triplex Plunger Pump

The YALONG Model T355 is a single acting triplex plunger pump rated at 335 HP in intermittent duty services . This versatile pump is offered with a variety of material and design options that make it ideal for general industrial, high pressure cleaning, and typical applications involved in the production of oil and natural gas.



Specifications	English Units	Metric Units
Stroke Length		130 mm
Rated Rod Load	23810 lb	10800 Kg
Pump Weight	1984 lb	1100 Kg
Gear Reduction Ratio		3.5:1/ 4.086:1/ 4.619:1
Max. Fluid Temp	°F	90 °C
Mechanical Efficiency		85%

Specifications	Continuous	Intermittent
Rated bhp		335 HP
Maximum Speed		
Minimum Speed		90 rpm
Max. plunger size x stroke length.		75x130mm
Pinion shaft extension:		65x100 mm
Keyway (width x depth x length)		16x6x90 mm

Performance Ratings

(Volumes indicated are displacement of incompressible fluid)

Input Speed : 1480rpm Pump Speed : 422rpm				Input Speed : 1776rpm Pump Speed : 507rpm				Input Speed : 1480 Pump Speed : 362rpm				Input Speed : 1776rpm Pump Speed : 434rpm				Input Speed : 1480rpm Pump Speed : 320rpm				Input Speed : 1776rpm Pump Speed : 384rpm						
Power KW		200 220 250		200 220 250		Power KW		Power KW		200 220 250		200 220 250		Power KW		Power KW		200 220 250		200 220 250		Power KW				
Rated Flow	Rated Pressure (Mpa)	Plunger Dia. mm		Rated Pressure (Mpa)	Rated Flow	Rated Flow	Rated Pressure (Mpa)	Plunger Dia. mm	Rated Pressure (Mpa)	Rated Flow	Rated Flow	Rated Pressure (Mpa)	Plunger Dia. mm	Rated Pressure (Mpa)	Rated Flow	Rated Flow	Rated Pressure (Mpa)	Plunger Dia. mm	Rated Pressure (Mpa)	Rated Flow	Rated Flow					
L/min	m ³ /h				L/min	m ³ /h	L/min	m ³ /h	L/min	m ³ /h	L/min	m ³ /h	L/min	m ³ /h	L/min	m ³ /h	L/min	m ³ /h	L/min	m ³ /h						
41	2.46	250	265	280	18	200	225	255	50	3	35	2.1	280	18	220	250	280	43	2.58	31	1.86	38	2.28			
51	3.06	200	225	255	20	160	175	210	62	3.72	44	2.64	220	250	280	20	180	200	240	53	3.18	39	2.34	250	280	
62	3.72	160	175	210	22	135	150	175	75	4.5	53	3.18	180	200	240	22	160	170	200	64	3.84	47	2.82	210	230	270
74	4.44	135	150	175	24	115	125	150	89	5.34	63	3.78	160	170	200	24	135	150	175	76	4.56	56	3.36	175	195	230
87	5.22	115	125	150	26	100	110	125	104	6.24	74	4.44	135	150	175	26	115	125	150	89	5.34	66	3.96	150	165	195
100	6	100	110	130	28	85	95	110	120	7.2	86	5.16	115	125	150	28	100	110	125	104	6.24	76	4.56	135	150	175
116	6.96	85	95	110	30	70	80	95	139	8.34	99	5.94	100	110	135	30	85	95	110	119	7.14	88	5.28	115	125	150

*Flows are based on 100% volumetric efficiency. Brake Horsepower /Kilowatts Required is based on 90% Mechanical Efficiency, Actual application horsepower requirements can be calculated using the equation: BHP = (GPM * PSI) / (1714 * 0.90); Consult YaLong for continuous service speeds in excess of 418 RPM.